

PRISMA™

see your space in
a new light



A revolutionary glass vertical retractable wall



PRISMA™

The solution is clear



Introducing Skyfold Prisma

Every now and then something revolutionary comes along. Skyfold Prisma is precisely that – a revolution in acoustical retractable glass walls.

With an astonishing acoustic rating of (STC 52/Rw52), this vertically telescoping glass wall can control sound and let light in, reducing stress, enhancing morale, and improving productivity.

Prisma has clean, elegant lines with no floor or wall tracks to ruin the aesthetic of the space. Spaces can be reconfigured quickly and quietly with the use of a digital keypad.

Prisma is a brilliant addition to the world leading portfolio of Skyfold products.

Skyfold Prisma – clearly acoustically advanced.

ADVANTAGES

- Retracts into the ceiling to maximize floor space
- No floor, wall tracks or visible hinges
- Fully automatic
- Easy-to-use digital keypad operation
- Quiet operation
- Equipped with a safety obstruction sensor

ACOUSTIC PERFORMANCE OF INSTALLED SYSTEMS

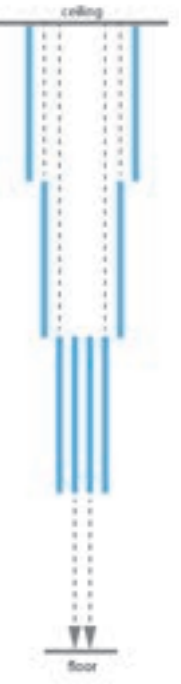
- Superior sound isolation (STC 52 / RW 52)

CUSTOM DIMENSIONS

- Width: Unlimited
- Height: Maximum height 12 feet (3.6m)

FINISHES

- Glass, etched glass, frosted or colored glass and a variety of standard finish options



Prisma™

Let in the light and **keep out the noise**



Prisma Typical Dimensions Chart

IMPERIAL

| CEILING HEIGHT "A" | *BEAM HEIGHT "B" | TOP OF POCKET "C" | POCKET HEIGHT "D" | POCKET WIDTH "E" | NUMBER OF PANELS HIGH |
|--|--|-------------------------------------|-------------------|--|-----------------------|
| 7'-0" 7'-6" 8'-0" | 9'-7 1/2" 10'-3" 10'-10 1/2" | 31.5 33 34.5 | 18 | 20.625 22.125 23.625 | 4 Panels High |
| 8'-1" 8'-6" 9'-0" 9'-6" 10'-0" | 10'- 7 1/2" 11'-1 1/2" 11'-9" 12'-4 1/4" 12'-11 1/2" | 30.5 31.5 33 34.25 35.5 | 21 | 19.125 20.125 21.3125 22.5 23.75 | 5 Panels High |
| 10'-1" 10'-6" 11'-0" 11'-6" 12'-0" | 12'-9" 13'-3" 13'-10" 14'-5" 15'-0" | 32 33 34 35 36 | 24 | 19.9375 20.75 21.75 22.75 23.75 | 6 Panels High |

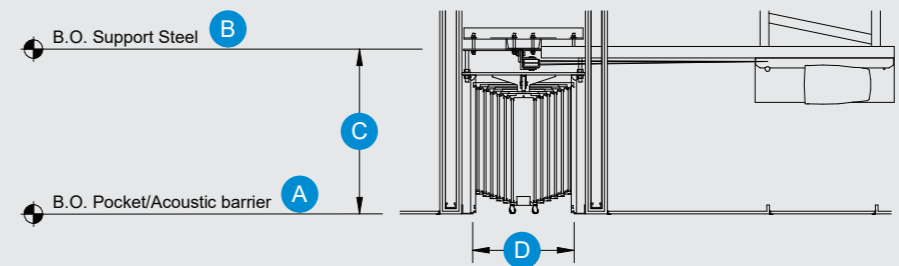
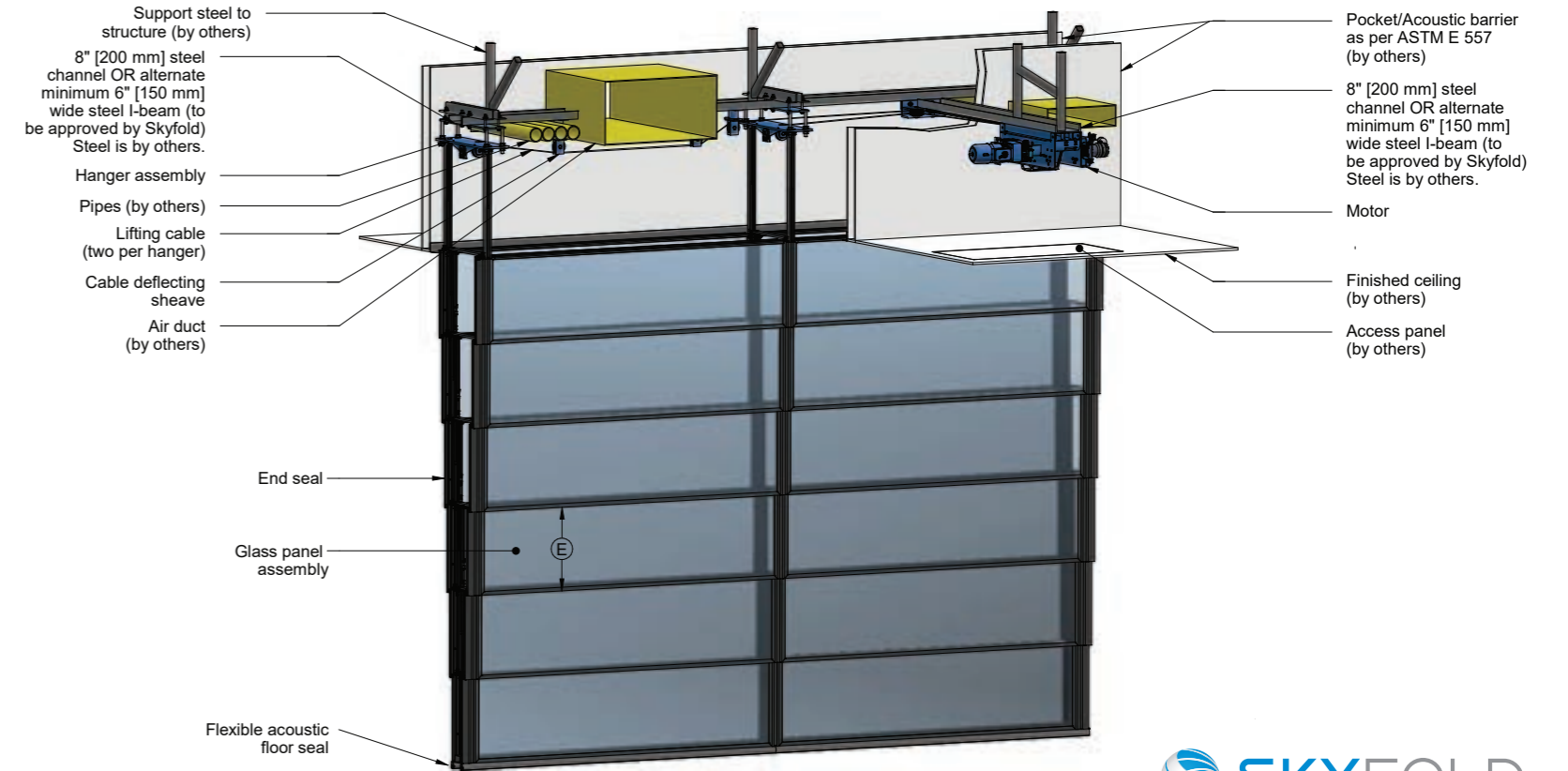
*** Beam heights indicated may vary with wall size and motor size.**
 DIMS FOR REMOTE COMPACT 90 DRIVE SYSTEM - PANELS ≤ 24"
 This table is not for construction purposes. Refer to shop drawings for final build to dimensions.

METRIC

| CEILING HEIGHT "A" | *BEAM HEIGHT "B" | TOP OF POCKET "C" | POCKET HEIGHT "D" | POCKET WIDTH "E" | NUMBER OF PANELS HIGH |
|--|--|---|-------------------|---|-----------------------|
| 2150 2200 2250 2300 2350 2400 2440 | 2955 3020 3080 3145 3205 3270 3320 | 805 820 830 845 855 870 880 | 455 | 528.6 541.3 554 566.7 579.4 590.6 601.7 | 4 Panels High |
| 2450 2500 2550 2600 2650 2700 2750 2800 2850 2900 2950 3000 3050 | 3225 3285 3345 3405 3465 3525 3585 3645 3705 3765 3825 3885 3945 | 775 785 795 805 815 825 835 845 855 865 875 885 895 | 535 | 482.6 493.7 503.2 512.8 523.9 533.4 542.9 552.5 563.6 573.1 582.6 593.7 603.3 | 5 Panels High |
| 3075 3200 3350 3500 3650 3660 | 3885 4030 4205 4380 4555 4565 | 810 830 855 880 905 905 | 610 | 506.4 527 552.5 577.8 603.3 603.5 | 6 Panels High |

*** Beam heights indicated may vary with wall size and motor size.**
 DIMS FOR REMOTE COMPACT 90 DRIVE SYSTEM - PANELS ≤ 673mm
 This table is not for construction purposes. Refer to shop drawings for final build to dimensions.

Prisma Technical Drawing





For more information visit our website or contact us directly.

MAIN OFFICE

325 Lee Avenue
Montreal, Quebec
CANADA H9X 3S3

T +1 (514) 457-4767
F +1 (514) 457-7111
info@skyfold.com
www.skyfold.com



E01/2022

Recycled materials: Up to 97%
Post-consumer: Up to 27%
Pre-consumer: Up to 51%

SKYFOLD®, SKYFOLD® Classic™, SKYFOLD Zenith® and SKYFOLD Mirage® are registered trademarks of Skyfold Inc. and Skyfold Investments Ltd.

Skyfold is pleased to be an official member of the U.S. Green Building Council. The Green Council is committed to promoting better designed buildings that are not only more environmentally and socially responsible, but also help improve the quality of life for those who occupy them and the communities in which they are built. The Council has developed a benchmarking system known as LEED (Leadership in Energy & Environmental Design). When it comes to recycled materials, architects and owners who choose a Skyfold vertically folding operable wall system can calculate the following toward LEED accreditation on their projects. In order to continue protecting our environment, it is essential that we all do our part by using recycled materials whenever possible. Skyfold is proud to help.