

# VERTICAL INNOVATION

The Acoustic Leader in Vertically Folding Retractable Walls



# Revolutionizing How You Design Spaces

## ABOUT US

At Skyfold Inc. we "think vertical": we are the acoustic leader in vertically folding retractable walls. Our walls are more than just space dividers: they are innovative, custom, electric and premium multipurpose space solutions that allow architects, interior designers, contractors and end-users to redefine how a space is used.

Our solutions are not just acoustical walls used to reconfigure spaces; they are created to be multipurpose design pieces that live within a space. With a wide selection of finish options that can be mix-and-matched, your Skyfold wall can be customized to complement, and even enhance, your space's design.

We are innovators and leaders in the movable wall industry. All Skyfold walls are expertly made in the manufacturing facility at the Skyfold Headquarters in Montreal, Canada. With thousands of walls installed worldwide, Skyfold is the premium choice for architects, interior designers, and end users.

## WHY SKYFOLD

- Acoustic leader in Vertically retractable walls - Up to STC60 / RW59
- Up to 11 meters high (36ft) and infinite length
- Easy-to-use operable wall
- Equipped with a Safety Obstruction sensor
- Tested and proven performance with thousands of installations worldwide
- Space saving - wall disappears into the ceiling to maximize the floor space
- Time and Labor saving. Give users the flexibility to quickly divide or expand spaces
- Customizable to any space, large or small. Stepped and Sloped, between columns, intersecting walls.
- Solid wall partions and Glass wall systems
- Freedom in design with infinite finish possibilities
- International Dealer network
- 10-year acoustic warranty
- Sustainability. Designing for the future





Discover the Skyfold family of products:  
Custom built and automatic vertically folding operable walls that unite acoustics, flexibility, design and performance.

All Skyfold systems are:

- Acoustic walls that exceed industry standards
- Space dividers that are self-retracting and sized for each project
- Decorative elements with distinctive, customizable design options

## Table of Contents

2-3	About Us	46-51	Prisma
6-15	Zenith Series	52-53	Options
16-25	Zenith Premium Series	54-73	Finishes
24-33	Classic Series	74-83	Applications
34-37	Classic Premium Series	84-85	Comparison summary
38-45	Mirage	86-101	Dimension charts

# Zenith® | Zenith Premium



Adrien Williams Photos Inc.

## Innovative vertical wall technology

Zenith combines vertically folding elements at the top portion of the wall with a sleek straight down descent thereafter, which makes it the ideal flexible space solution for areas that may have wall obstructions which could limit the use of a vertically folding partition wall. With the Zenith's narrow path of travel, you don't have to overhaul the placement of the furniture in the space to operate the partition wall.

The Zenith® Premium encapsulates every benefit of the Zenith® with these added features:

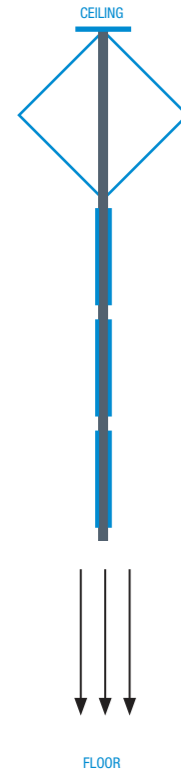
- LED lighting (optional)
- Digital Touch Screen
- Ceiling closure panels
- Constant Speed drive
- 10-Year (or 5000-Cycle) Parts Warranty



# Zenith® Series

## ADVANTAGES

- Retracts into the ceiling to maximize floor space
- Industry-leading STC ratings
- No floor, wall tracks or visible hinges
- Fully automatic
- Easy-to-use turn-key or digital keypad operation
- Quiet operation
- Lightweight panels
- Flat and rigid
- Cost-effective and lightweight structure
- Can be installed to meet at 90°
- Can be used in stepped and sloped spaces
- Equipped with a safety obstruction sensor
- Variety of finish options



## ACOUSTIC PERFORMANCE OF INSTALLED SYSTEMS

- Zenith 48: Excellent sound isolation (STC 48 / RW 47)
- Zenith 51: Exceptional sound isolation (STC 51 / RW 51)
- Zenith 55: Superior sound isolation (STC 55 / RW 54)
- Zenith 60: Maximum sound isolation (STC 60 / RW 59)
- Zenith NRC: Excellent sound absorption with noise reduction coefficient (NRC/SAC) of up to 0.65 (STC 50 / RW 49)

## CUSTOM DIMENSIONS

- Width: Unlimited
- Height: Maximum height 14 feet (4.27m)

## FINISHES (with the exception of the Zenith 48 model)

- Wood Veneer, Metal, Vinyl, Fabric, Plastic Laminate (Melamine), Paint, Mural, Marker Board Surface or create a custom design. (Zenith NRC is available in acoustically transparent fabric only)

Zenith 48 model only:

- Maximum wall length up to 48 feet (14.6m)
- Only one finish per wall: One of Skyfold's standard fabric, standard vinyl, standard paint or standard white Markerboard surface finish



Photos: David Churchill

DBRS LONDON - London, England UK  
Skyfold Zenith® 55

Architect / Interior Designers: Originate Architects

# Zenith® Series



# Zenith® Series



# Zenith® Series



Photos: ©RMA Photography Inc.

Bernard Zell School Anshe Emet Day School Expansion - Chicago, Illinois USA  
Skyfold Zenith® 60  
Architect / Interior Designers: Wheeler Kearns Architects



Wheeler Kearns Architects  
Project: Bernard Zell Anshe Emet Day School  
Steve Hall & Kendall Ristau Photographers, LTD



Air Lease - Los Angeles, California USA  
 Skyfold Zenith® Premium 60  
 Architect / Interior Designers: HOK



# Zenith® Series | Premium

Seamless integration into any space

The Zenith® Premium Series—the newest addition to the Skyfold line of products—encapsulates every benefit of Skyfold walls while solidifying Skyfold's place as the leader in automated vertical wall innovation: superior acoustic performance, ease-of-use, design, and seamless integration into any space.

# Zenith® Series | Premium

## ADVANTAGES

- Retracts into the ceiling to maximize floor space
- Industry-leading STC ratings
- Seamless ceiling integration with horizontal panels
- Narrow path of travel
- No floor, wall tracks or visible hinges
- Fully automatic
- Easy-to-use operation with LCD display touch screens
- Quiet operation
- Lightweight panels
- Flat and rigid
- Cost-effective and lightweight structure
- Faster deployment compared to other models
- Equipped with a safety obstruction sensor
- Variety of finish options

### ACOUSTIC PERFORMANCE OF INSTALLED SYSTEMS

- Zenith Premium 51 Exceptional sound isolation (STC 51 / RW 51)
- Zenith Premium 55 Superior sound isolation (STC 55 / RW 54)
- Zenith Premium 60 Maximum sound isolation (STC 60 / RW 59)
- Zenith Premium NRC Excellent sound absorption with noise reduction coefficient (NRC/SAC) of up to 0.65 (STC 50 / RW 49)

### CUSTOM DIMENSIONS

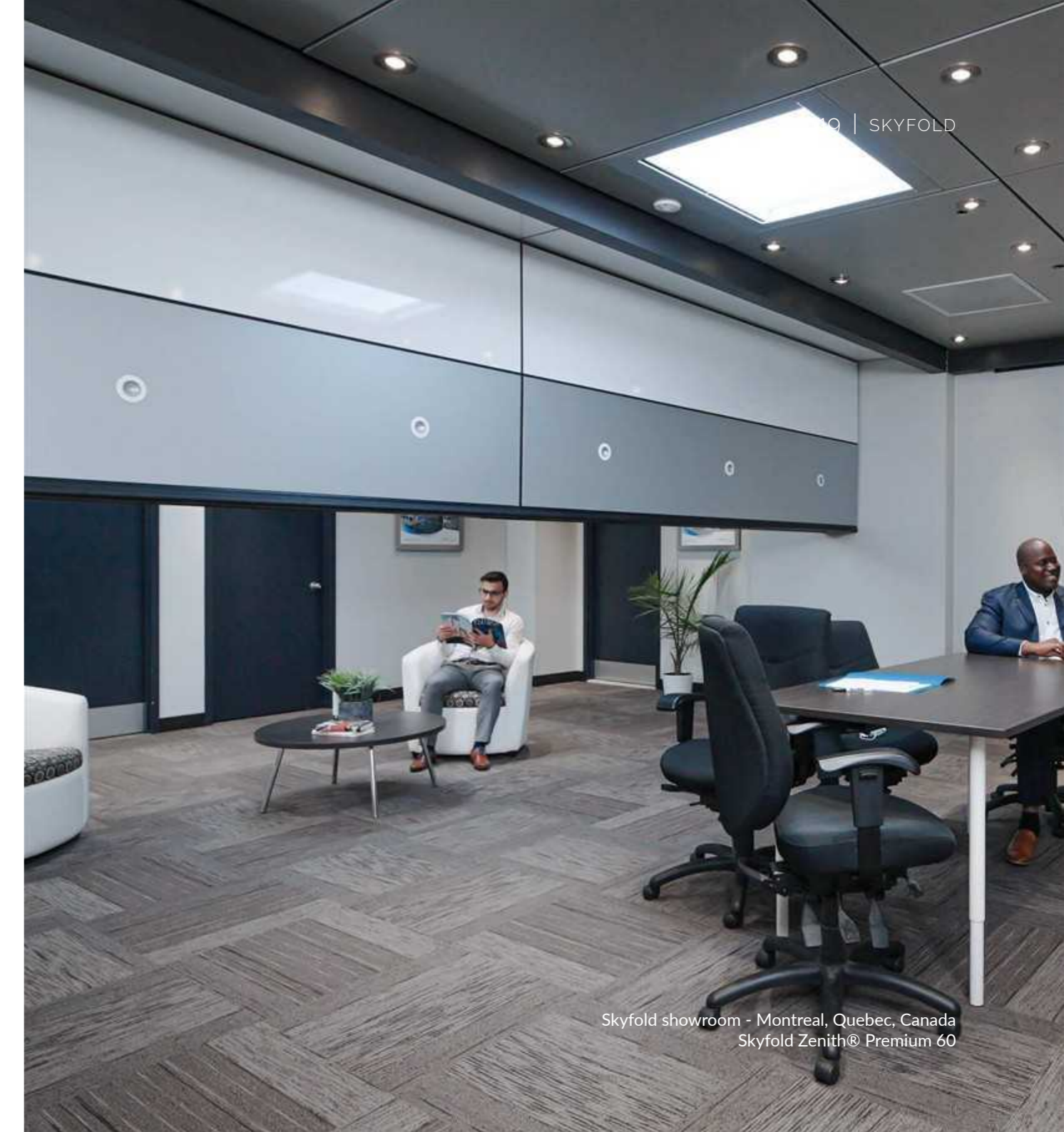
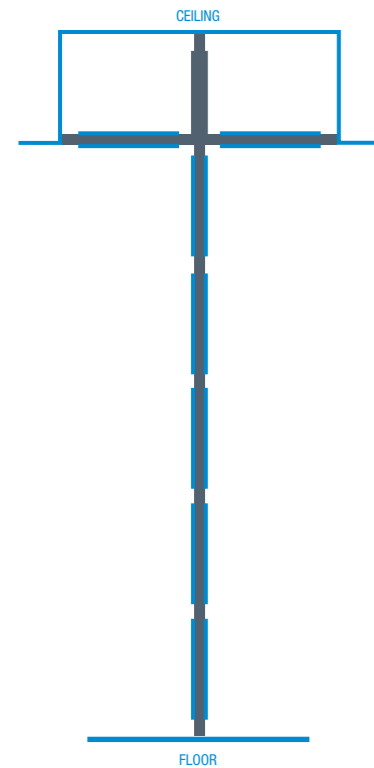
- Width: Unlimited
- Height: Maximum height 14 feet (4.27m)

### STANDARD FEATURES

- Pocket closure panels
- Two LCD display touch screens with a multilingual interface
- Faster deployment time (versus regular Zenith model)

### FINISHES

- Wood Veneer, Metal, Vinyl, Fabric, Plastic Laminate (Melamine), Paint, Mural, Marker Board Surface or create a custom design. (Zenith Premium NRC is available in acoustically transparent fabric only)



Skyfold showroom - Montreal, Quebec, Canada  
Skyfold Zenith® Premium 60

# Zenith® Series | Premium



Copper Blues Live at Desert Ridge - Phoenix, Arizona USA  
Skyfold Zenith® Premium 60  
Architect / Interior Designers: Bar Napkin Productions

# Zenith® Series | Premium

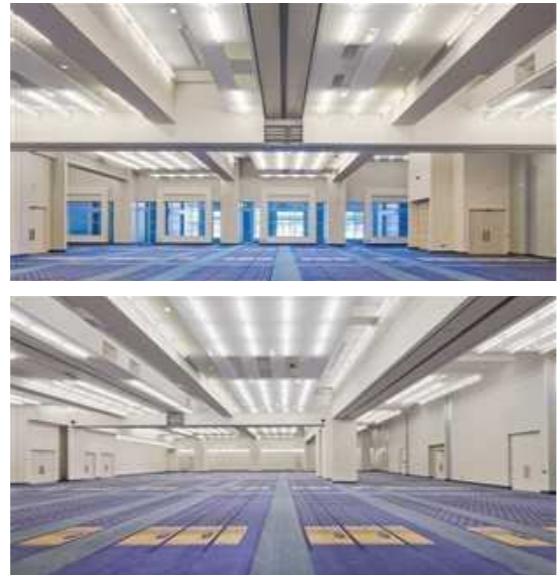


Fish & Richardson - San Diego, California USA  
Skyfold Zenith® Premium 51  
Architect / Interior Designers: ID Studios





Walter E. Washington Convention Center - Washington D.C. USA  
Skyfold Classic 51™  
Architect / Interior Designers: Group Goetz Architects



## Classic™ Series

Developed to meet the acoustic challenges of geometrically variable spaces

Exceeding industry standards, the acoustic capabilities for Classic 51, 55 and 60 ensure privacy and confidentiality are controlled from one space to another. The Classic NRC model reduces ambient noise.

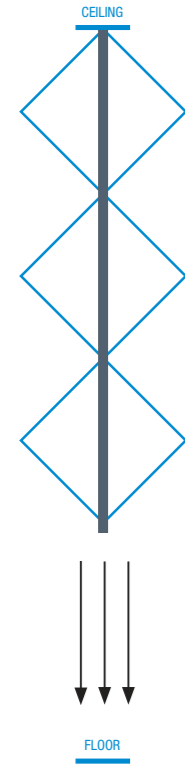
This vertical type of folding system allows the Classic to reach higher ceiling heights than the Zenith and Zenith Premium models, making it the ideal solution for rooms with high ceilings. Inversely, the Classic's micro drive motor option is an ideal solution for walls under 9 feet tall with tight plenum spaces.



# Classic™ Series

## ADVANTAGES

- Retracts into the ceiling to maximize floor space
- Industry-leading STC ratings
- No floor, wall tracks or visible hinges
- Fully automatic
- Easy-to-use turn-key or digital keypad operation
- Quiet operation
- Lightweight panels
- Flat and rigid
- Cost-effective and lightweight structure
- Variety of finish options
- Can be installed to meet at 90°
- Can be used in stepped or sloped spaces
- Equipped with a safety obstruction sensor



### ACOUSTIC PERFORMANCE OF INSTALLED SYSTEMS

- Classic 51 Excellent sound isolation (STC 51 / RW 51)
- Classic 55 Superior sound isolation (STC 55 / RW 54)
- Classic 60 Maximum sound isolation (STC 60 / RW 59)
- Classic NRC Excellent sound absorption with a noise reduction coefficient (NRC/SAC) of up to 0.65 (STC 50 / RW 49)

### CUSTOM DIMENSIONS

- Width: Unlimited
- Height: Maximum height 36 feet (11m)

### FINISHES

- Wood Veneer, Metal, Vinyl, Fabric, Plastic Laminate (Melamine), Paint, Mural, Marker Board Surface or create a custom design. (Classic NRC is available in acoustically transparent fabric only)



Gorinchem Easyfairs – Gorinchem, Netherlands  
 Skyfold Classic™ 51  
 Architect / Interior Designers: Owner

# Classic™ Series



Omni Hotel OBSH – Boston, Massachusetts USA  
Skyfold Classic™ 55  
Architect / Interior Designers: Elkus Manfredi, along with Moody Nolan - Boston



# Classic™ Series



Photography: snapWerx LLC

Cape Fear Valley Academic Center - Fayetteville, North Carolina USA  
Skyfold Classic™ 51  
Architect / Interior Designers: LTC Associates Architects



# Classic™ Series



Photography: Lawrence Anderson Photography

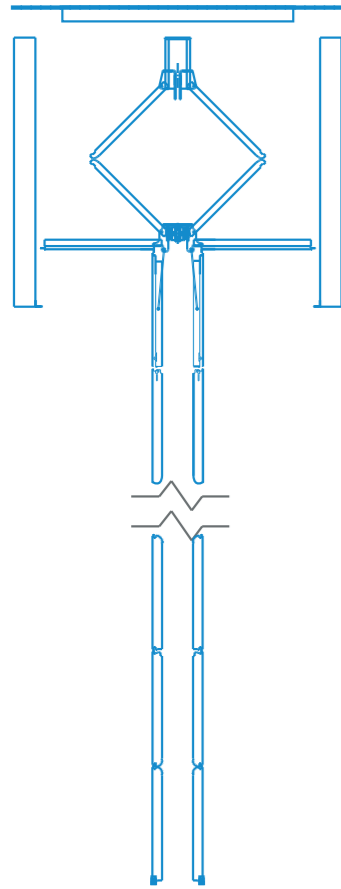


Riverside County Office of Education-RCOE - Riverside, California USA  
Skyfold Classic™ 55  
Architect / Interior Designers: HMC

# Classic™ Premium

## ADVANTAGES

- Retracts into the ceiling to maximize floor space
- Maximum sound isolation (STC 60 / RW 59)
- Width: Unlimited
- Height: Maximum height 34 feet (10.360m)
- No floor, wall tracks or visible hinges
- Fully automatic
- Digital keypad operation (included)
- Quiet operation
- Lightweight panels
- Flat and rigid
- Cost-effective and lightweight structure
- Variety of finish options
- Can be used in stepped or sloped spaces
- Equipped with a safety obstruction sensor
- Variety of finish options



## ACOUSTIC PERFORMANCE OF INSTALLED SYSTEMS

- Skyfold® Classic Premium 51™:  
System STC 51 (Rw 51), Panel Construction STC 61 (Rw 60)
- Skyfold® Classic Premium 55™:  
System STC 55 (Rw 54), Panel Construction STC 61 (Rw 60)
- Skyfold® Classic Premium 60™:  
System STC 60 (Rw 59), Panel Construction STC 66 (Rw 64)
- Skyfold® Classic Premium NRC™:  
System STC 50 (Rw 49), Panel Construction STC 60 (Rw 58)

## CUSTOM DIMENSIONS

- Width: Unlimited
- Height: Maximum height 34 feet (10.360m)

## FINISHES

- Wood Veneer, Metal, Vinyl, Fabric, Plastic Laminate (Melamine), Paint, Mural, Marker Board Surface or create a custom design. (Classic NRC is available in acoustically transparent fabric only)



Skyfold Classic™ Premium  
Rendering: Ziah Frosh Media

# Classic™ Premium





Arhus Roeselare - Belgium  
Skyfold Skyfold Mirage®  
Architect / Interior Designers: B2A



Photography: Hans Morren NL

## Mirage®

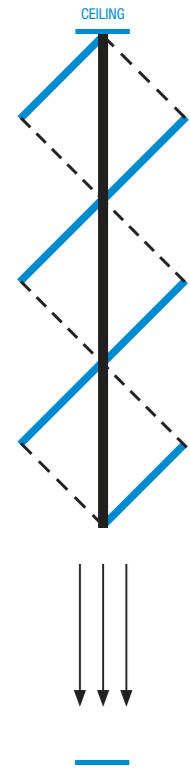
The space division solution that does not compromise on an open concept design plan

Mirage® incorporates Skyfold technology with the added luxury of transparency. Clean lines, a lightweight structure, a wide range of glass and plexiglass, solid panels, and ease of maintenance make Mirage the perfect solution for bright, sophisticated and welcoming spaces. In dark and isolated rooms without windows, Skyfold Mirage allows for hallways and windows to lend their light to otherwise isolated spaces.



# Mirage®

## ADVANTAGES



- Retracts into the ceiling to conserve floor space
- Acoustic properties
- No floor tracks
- Fully automatic
- Easy-to-use turn-key or keypad operation
- Quiet operation
- Rigid and lightweight
- Variety of glass, plexiglass and solid panel options to meet your design needs
- Equipped with an infrared safety system

### ACOUSTIC PERFORMANCE OF INSTALLED SYSTEMS

- Mirage: Single laminated glass (STC 33 / RW 33)

### CUSTOM DIMENSIONS

- Width: Unlimited
- Height: Maximum height 24 feet (7.3m)

### FINISHES

- Glass available in a variety of finishes, including Plexiglass, Lexan®, Bullet-Proof Glass, Frosted Glass.
- Frame colors: Endless options to enhance your design



Costeo Photography Inc.



South Lake Tahoe High School - California USA  
Skyfold Mirage®  
Architect / Interior Designers: LPA

# Mirage®



Freewheel – Chicago, Illinois USA  
Skyfold Mirage®  
Architect / Interior Designers: Garnett Architects



# Mirage®



Da Vinci High School - Davis, California USA  
Skyfold Mirage®  
Architect / Interior Designers: Lionakis



Photography: Technical Imagery Studios



# Prisma™

Acoustically advanced glass panels that control the noise but let the light in. See your spaces in a new light.

Every now and again a step change in innovation is made. Skyfold Prisma is one of those times. A revolution in the acoustic separation of vertically retractable wall systems.

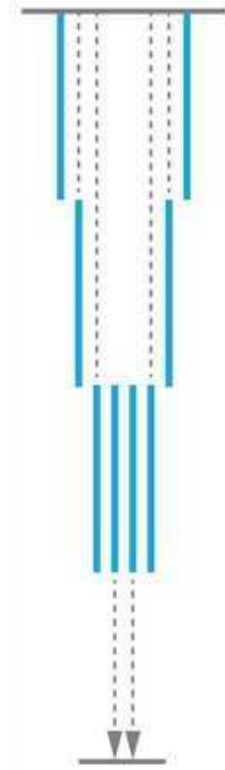
Our innovative acoustic glass system has elegant, clean lines with no floor or wall tracks to spoil the aesthetic. With the flexibility to add in a colourful mix of opaque and solid panels of fabrics and laminates, Skyfold Prisma becomes a key design element for any space.

Skyfold Prisma – clearly acoustically advanced.



# Prisma™

## ADVANTAGES



- Retracts into the ceiling to maximize floor space
- No floor, wall tracks or visible hinges
- Fully automatic
- Easy-to-use digital keypad operation
- Quiet operation
- Equipped with a safety obstruction sensor

### ACOUSTIC PERFORMANCE OF INSTALLED SYSTEMS

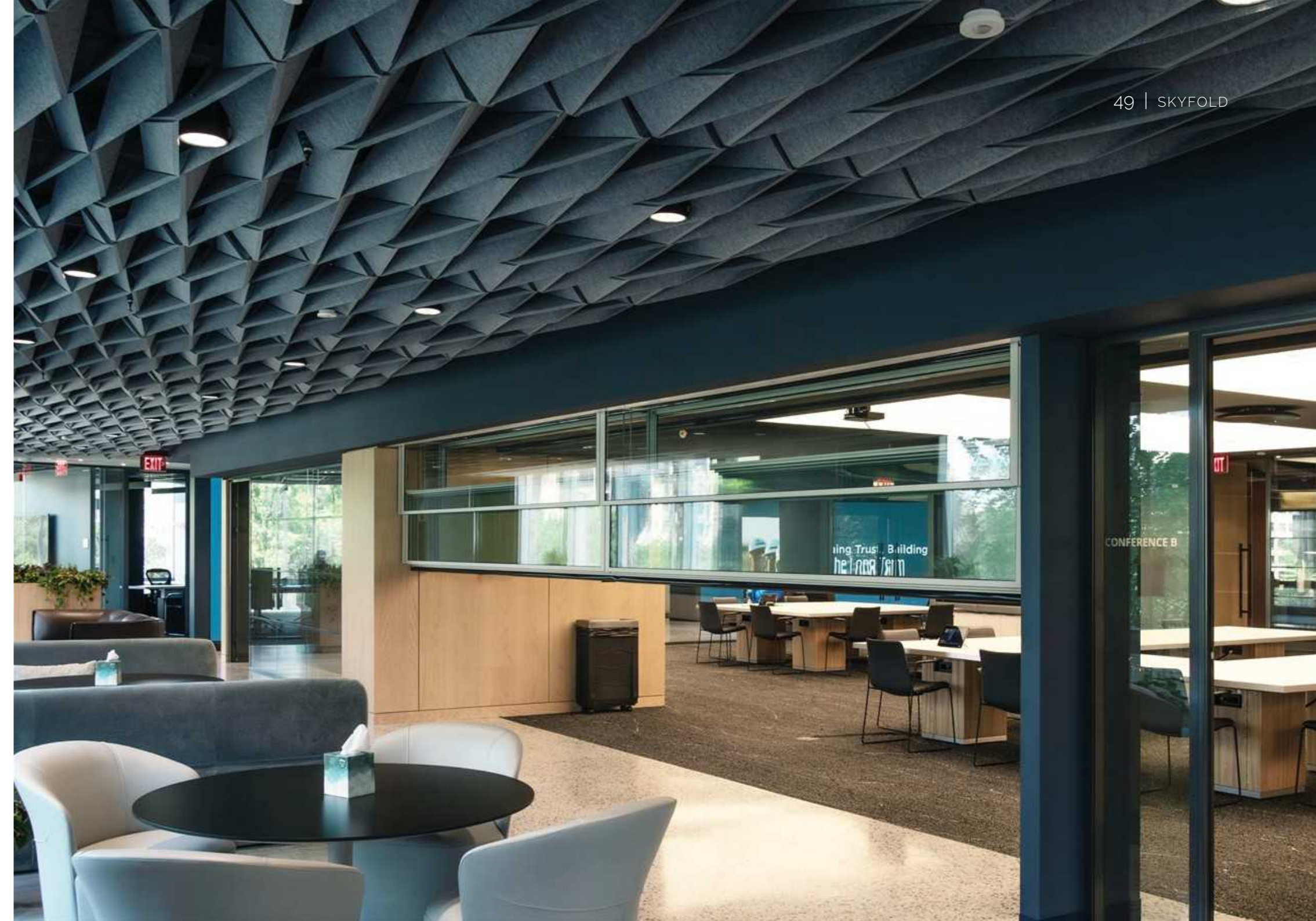
- Superior sound isolation (STC 52 / Rw 52)

### CUSTOM DIMENSIONS

- Width: Unlimited
- Height: Maximum height 12 feet (3.6m)

### FINISHES

- Glass, etched glass, frosted or colored glass and a variety of standard finish options



# Prisma™

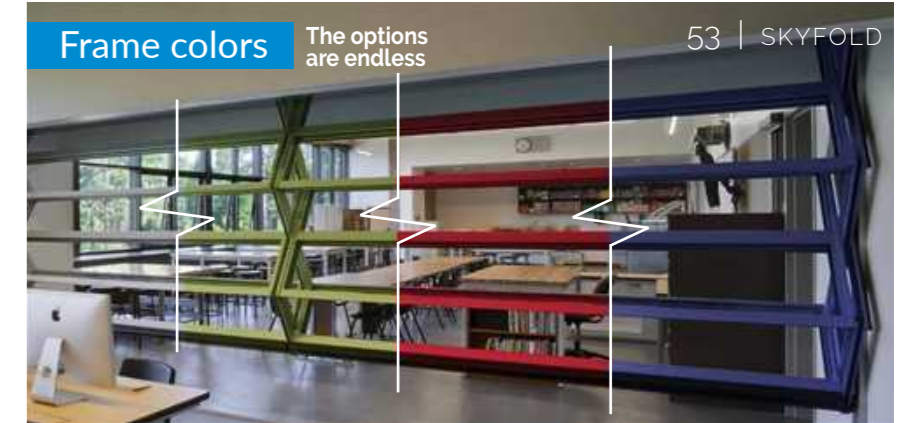


Skyfold Prisma™  
Rendering: Skyline Entourage



# • Available Options

	Zenith	Zenith Premium	Classic	Classic Premium	Mirage	Prisma
Key/Button Control	●	●	●	●	●	
Digital Touch Screen	●	Included	●	Included	●	Included
LED Lighting	●	●	●	●		
Seal colors	●	●	●	●		
Frame colors					●	●



**LED Lighting:** Available on all models except for the Mirage glass model. Available in two bezel shapes that surround the frosted glass lens. Available in neutral white (4000K) and warm white (2800K).

**Digital Touch Screen:** Simple to use. Backlit 10-key keypad. Multilingual capabilities. 4-digit programmable user PIN. Real-time on-screen communication display. 2 digital keypads included. Connection to optional LED lighting with dimming feature available. Available on all Skyfold models!

**Key/Button Control:** Easy to use Turn-Key operation. With a simple push button operation, a room can be quickly and quietly reconfigured to provide the user with tremendous space flexibility. There is no longer any need for manual intervention to position the wall in order to change a room's configuration.

**Acoustic seals:** Available in white or black. Available on all models except for the Mirage. White seals not available on Zenith 48.

**Frame colors:** Standard and custom colors available. Available on Mirage glass model only.

# Finishes - freedom to design

Fabric | Vinyl | Wood Veneer | Marker Board  
 Mixed Finishes | Murals | Specialty Metals  
 Plastic Laminate | Paint

Panel finishes cannot exceed 1/8" (3mm) in thickness. Moreover, customer supplied vinyl or fabrics cannot exceed 0.040" (1mm) in thickness since these finishes are wrapped around Skyfold's panel edges. Finishes that exceed 0.040" (1mm) in thickness can be applied onto the face of the panel only and must be rigid in nature, such as a plastic laminate or wood veneer.

Maximum weight of material: 0.111 lbs/ft<sup>2</sup> (0.542 kg/m<sup>2</sup>). Only acoustically transparent fabric finish for NRC models.



# Fabric



A. SAP – Moscow, Russian Federation  
 Skyfold Classic™ 55  
 Architect / Interior Designers: UNK Architects



B. Stadsbader – Harelbeke, Belgium  
 Skyfold Classic™ NRC  
 Architect / Interior Designers: Bureau d'Hondt



C. Grand Hyatt - Singapore  
 Skyfold Classic™ 55  
 Architect / Interior Designers: Super Potato



Mayer Brown International – London, United Kingdom  
 Skyfold Classic™ 60  
 Architect / Interior Designers: MCM Architecture

# Vinyl



Bernard Andre Photography

A. UCSF Anatomy Lab, San Francisco, California USA  
Skyfold Classic™ 51  
Architect / Interior Designers: Harley Ellis Devereaux



B. JW Marriott – Nashville, Tennessee USA  
Skyfold Classic™ 55  
Architect / Interior Designers: SRSSA

C. Lumsden Elementary School – Saskatchewan, Canada  
Skyfold Classic™ 51  
Architect / Interior Designers: Pattison MGM Architectural Services



Meadow Park ES - Irvine, California USA  
Skyfold Zenith® 60  
Architect / Interior Designers: Studio WC  
Photocredit: © RMA Photography Inc.

# Wood Veneer



A. UKCMRI The Francis Crick Institute – London, Eng. UK  
 Skyfold Classic™ 60  
 Architect / Interior Designers: HOK

B. Blue Bay Asset Management – London, Eng. UK  
 Skyfold Classic™ 51  
 Architect / Interior Designers: HLW

C. Perth College – Perth, Australia  
 Skyfold Classic™ 55  
 Architect / Interior Designers: Parry & Rosenthal Architects



Katten Muchin Rosenman LLP - Los Angeles, California USA  
 Skyfold Classic™ 51  
 Architect / Interior Designers: HOK

# Marker Board



A. Reilly Pozner - Denver, Colorado USA  
 Skyfold Classic™ 51  
 Architect / Interior Designers: Gensler

B. Ellie Mae Innovation Center - Pleasanton, California USA  
 Skyfold Zenith® 48  
 Architect / Interior Designers: Gensler

C. Camden Living - Houston, Texas USA  
 Skyfold Classic™ 55  
 Architect / Interior Designers: Gensler



④ ITEMS

-AIR	→	17
-WATER	→	21
-COFFEE	→	3
-COOKIES	→	7
-CATS	→	12
-DOGS	→	13
		?

Texas A&M & Methodist, Houston, Texas USA  
 Skyfold Classic™ 55  
 Architect / Interior Designers: Corgan Associates

# Mixed Finishes



A. Vedanta - London, England UK  
 Skyfold Zenith® 55  
 Architect / Interior Designers: Modus Workspace



B. Rex H&V - NC Heart & Vascular Hospital - Raleigh, NC USA  
 Skyfold Zenith® 55  
 Architect / Interior Designers: WHR Design, P.C



C. ESC Region 10  
 Skyfold Classic™ 55  
 Architect / Interior Designers: VLK

Photography Chad M Davis



BASF Corporation - Davis, California USA  
 Skyfold Zenith® 55  
 Architect / Interior Designers: Comstock Johnson Architects

# Graphic Murals



A. Desjardins – Laval, Quebec Canada  
 Skyfold Classic™ 55  
 Architect / Interior Designers: Heloise Thibodeau

B. Pfizer – Memphis, Tennessee USA  
 Skyfold Classic™ 55  
 Architect / Interior Designers: Boyle Group

C. CFC Headquarters – Sterling, Virginia USA  
 Skyfold Classic™ 51  
 Architect / Interior Designers: Fox Architects



St Andrews Healthplex – Ridgeland, Mississippi USA  
 Skyfold Classic™ 51  
 Architect / Interior Designers: Cooke Douglass Farr Lemons

# Metals



A. Qatar National Convention Center – Doha, Qatar  
 Skyfold Classic™ 51  
 Architect / Interior Designers: Burns & McDonnell



B. Clover Park Technical College – Lakewood, Washington USA  
 Skyfold Classic™ 51  
 Architect / Interior Designers: McGranahan Architects

C. British Airways/Terminal #7-Airport – New York USA  
 Skyfold Classic 51™  
 Architect / Interior Designers: Corgan Associates



University of Iowa Carver Hawkeye  
 Arena - Iowa City, Iowa USA  
 Skyfold Classic™ 51  
 Architect / Interior Designers:  
 HNTB Architects / Neumann Monson Architects

# Plastic Laminate



Photography: Ken West Photography

A. Dardistown Crematorium – Dublin, Ireland  
 Skyfold Classic™ 60  
 Architect / Interior Designers: A&D Wejchert & Partners

B. Advocate Sherman Hospital – Elgin, Illinois USA  
 Skyfold Classic™ 51  
 Architect / Interior Designers: Anderson Mikos Architects

C. ArcBest HQ – Fort Smith, Arkansas USA  
 Skyfold Classic 55™  
 Architect / Interior Designers: Cromwell Architects



Colonial Life EWT - West Columbia, South Carolina USA  
 Skyfold Zenith® 55  
 Architect / Interior Designers: Derthick Henley & Wilkerson Architects

# Paint



A. SAP HQ – Dubai, United Arab Emirates  
 Skyfold Classic™ 55  
 Architect / Interior Designers: Luxe Interior International  
 along with IA Interior Architects



B. OCEC - Oman Conference & Exhibition Centre–  
 Muscat, Oman  
 Skyfold Classic™ 51  
 Architect / Interior Designers: WATG-London &  
 SSH Inter'l-Muscat



C. Martin's Valley Mansion, Maryland, USA  
 Skyfold Classic™ 51  
 Architect / Interior Designers:  
 Levin/Brown & Associates



The Engine Shed – Stirling, Scotland UK  
 Skyfold Classic™ 51  
 Architect / Interior Designers: Reiach and Hall Architects

# Applications

Workspace | Education | Hospitality |  
Healthcare | Convention Center

Specialty Applications

Stepped and Sloped Walls | Intersecting Walls | Egress



# Workspace

In an open concept office setup, employees have ample space to collaborate with colleagues, but are sometimes faced with noise distractions and a lack of privacy. Skyfold's acoustic flexible space solutions in offices worldwide present the ideal balance by creating multipurpose spaces that can be quickly divided while maintaining noise control and a sense of community.



A



B



C

Roger Brooks Photography

A. Borden Ladner Gervais – Vancouver, BC Canada  
Skyfold Classic™  
Architect / Interior Designers: HOK - Vancouver.

B. KPMG Vaughan Metropolitan Centre – Toronto, Ont Canada  
Skyfold Zenith® 51  
Architect / Interior Designers: Gensler

C. Stadsbader – Harelbeke, Belgium  
Skyfold Classic™ 51  
Architect / Interior Designers: Bureau d'Hondt

# Education

Schools are faced with a growing student population with a limited square footage. Skyfold's acoustic flexible space solutions allow schools to get creative with how they manage their space all while providing noise control so that students can focus on their studies.



A



B



C

Costeo Photography Inc.

A. South Lake Tahoe High School – California USA  
Skyfold Mirage®  
Architect / Interior Designers: LPA

B. University of West Georgia Biology Building – Georgia USA  
Skyfold Zenith® 55  
Architect / Interior Designers: Cooper Carry

C. Texas A&M University Mitchell Physics Building – Texas USA  
Skyfold Classic™ 51  
Architect / Interior Designers: Michael Graves & Associates

# Hospitality

When square footage and revenue are intertwined, you need to ensure that every inch of a client's space is used to the fullest. At a touch of a button, the Skyfold wall unfolds from the ceiling to transform your space in a matter of minutes without any manual labor.



A. Rosewood Hotel – Kowloon, Hong Kong  
Skyfold Classic™ 55  
Architect / Interior Designers: Ronald Lu & Partners  
along with Tony Chi Associates

B. The Berkeley Hotel – London, England, UK  
Skyfold Classic™ 55  
Architect / Interior Designers: Heah & Co.

C. Martin's Valley Mansion – Hunt Valley, Maryland USA  
Skyfold Classic™ 51  
Architect / Interior Designers: Levin/Brown & Associates

# Healthcare

Healthcare is constantly adapting to changes impacting the patients it serves. Skyfold walls are innovative and premium multipurpose space solutions that allow architects, interior designers, contractors and end-users to redefine how a space is used.



A. University of New Mexico – Health Science Center –  
Albuquerque, New Mexico USA  
Skyfold Classic™ 55  
Architect / Interior Designers: Dekker Perich Sabatini

B. University of California San Francisco MSB  
Anatomy Lab – USA  
Skyfold Classic™ 51  
Architect / Interior Designers: Harley Ellis Devereaux

C. Jackson Healthcare – Atlanta, Georgia USA  
Skyfold Classic™ 55  
Architect / Interior Designers: Rule Joy Trammell & Rubio

Katie Bricker Photography

# Convention Centers

With operable walls that go up to 36 ft. and that are unlimited in width, Skyfold provides acoustic and automated flexible space solutions for your exposition spaces. A multi-wall acoustic configuration gives you the opportunity to generate even more revenue as events can occur simultaneously without disruption.



A. Walter E Washington Convention Center – DC USA  
Skyfold Classic™ 51  
Architect / Interior Designers: Group Goetz Architects

B. OCEC - Oman Conference & Exhibition Centre  
Skyfold Classic™ 51  
Architect / Interior Designers: WATG-London & SSH Inter'I-Muscat  
255.9' long and 26.41' high (78m and 8.05m)

C. Swedish Gothia Towers – Gothenburg, Sweden  
Skyfold Classic™ 55  
Architect / Interior Designers: Abako Arkitektkontor

# Stepped & Sloped

Skyfold's automated vertically folding retractable walls are ideal for almost any space in an educational facility. Find Skyfold in stepped or sloped auditoriums for team meets, seminars or presentations. Skyfold provides acoustic and automated flexible space solutions for your auditorium spaces.



A. UKCMRI The Francis Crick Institute – London, England UK  
Skyfold Classic™ 60  
Architect / Interior Designers: HOK

B. OHSU - Oregon Health & Science University - Collaborative Life Science Building – Portland, Oregon USA  
Skyfold Classic™ 51  
Architect / Interior Designers: Sera & Co. Architects

C. Training Center in NYC - College Point, New York USA  
Skyfold Classic™ 55  
Architect / Interior Designers: Perkins & Will

# Intersecting wall

A multi-wall acoustic configuration gives you the opportunity to generate even more revenue as events can occur simultaneously without disruption. And, with options to intersect Skyfold walls at 90°, T- and L-angles, the floor plan configurations are endless.



A. Johnson Student Center – Santa Ana, California, USA  
Skyfold Classic™ 55  
Architect / Interior Designers: HPI Hill Partnership Inc.

B. DTE Mt Clemens – Mt. Clemens, Michigan, USA  
Skyfold Mirage® & Skyfold Classic™ 51  
Architect / Interior Designers: Tetra Tech

C. Cambridge Bio Genetics Office – Cambridge, Massachusetts, USA  
Skyfold Classic™ 51  
Architect / Interior Designers: Jacobs Engineering

# Egress door

There are many options to choose from when creating egress doors with Skyfold's vertically retracting walls. Not only do they provide practical and effective solutions, they can be a thing of beauty and exactly tailored to your specifications.



A. Westfield - Sydney Australia  
Skyfold Classic™ 51  
Architect / Interior Designers: Woods Bagot

B. Barn at Fallingwater - Mill Run, Pennsylvania USA  
Skyfold Classic™ 51  
Architect / Interior Designers: Bohlin Cywinski Jackson

C. Salvation Army - Harbour Light Center- Toronto, Ont. Canada  
Skyfold Classic™ 51  
Architect / Interior Designers: Diamond & Schmitt Architects

## PRODUCT LINE COMPARISON SUMMARY



Zenith® Series



Zenith® Premium Series



Classic™ Series



Classic™ Premium Series



Mirage®



Prisma™

	ZENITH SERIES					ZENITH PREMIUM SERIES				CLASSIC SERIES				CLASSIC PREMIUM SERIES				MIRAGE	PRISMA
	Model 48	Model 51	Model 55	Model 60	Model NRC	Model 51	Model 55	Model 60	Model NRC	Model 51	Model 55	Model 60	Model NRC	Model 51	Model 55	Model 60	Model NRC	Glass Model	Glass Model
<b>TECHNICAL (IMPERIAL)</b>																			
STC (System)	48	51	55	60	50	51	55	60	50	51	55	60	50	51	55	60	50	33	52
STC (Panel)	57	61	61	66	60	61	61	66	60	61	61	66	60	61	61	66	60	36 <sup>(1)</sup>	NA
NRC (System)	-	-	-	-	Up to 0.65	-	-	-	Up to 0.65	-	-	-	Up to 0.65	-	-	-	Up to 0.65	-	-
Max Height (ft.)	14	14	14	14	14	14	14	14	14	36	36	28	36	34	34	28	34	24	12
Max Length (ft.)	Unlimited	Unlimited	Unlimited	Unlimited	Unlimited	Unlimited	Unlimited	Unlimited	Unlimited	Unlimited	Unlimited	Unlimited	Unlimited	Unlimited	Unlimited	Unlimited	Unlimited	Unlimited	Unlimited
Weight (lbs/sq.ft.)	6	6.2	6.8	8.6	6.5	6.2	6.8	8.6	6.5	7	7.6	9.4	7.5	7	7.6	9.4	7.5	7.5	13
Available Finishes	Limited <sup>(3)</sup>	Various <sup>(1)</sup>	Various <sup>(1)</sup>	Various <sup>(1)</sup>	Fabric only <sup>(4)</sup>	Various <sup>(1)</sup>	Various <sup>(1)</sup>	Various <sup>(1)</sup>	Fabric only <sup>(4)</sup>	Various <sup>(1)</sup>	Various <sup>(1)</sup>	Various <sup>(1)</sup>	Fabric only <sup>(4)</sup>	Various <sup>(1)</sup>	Various <sup>(1)</sup>	Various <sup>(1)</sup>	Fabric only <sup>(4)</sup>	Various <sup>(2)</sup>	Various <sup>(2)</sup>
Ceiling space required for storage (ft.) - (approx.)	2'-0" to 2'-8.25"	2'-0" to 2'-8.25"	2'-0" to 2'-8.25"	2'-0" to 2'-8.25"	2'-0" to 2'-8.25"	2'-0" to 2'-10"	2'-0" to 2'-10"	2'-0" to 2'-10"	2'-0" to 2'-10"	2'-0" to 6'-4"	2'-0" to 6'-4"	2'-0" to 5'-0"	2'-0" to 6'-4"	2'-0" to 6'-4"	2'-0" to 6'-4"	2'-0" to 5'-0"	2'-0" to 6'-4"	3'-2" to 4'-9"	36"
Pocket Width (ft.) - (approx.)	55" to 63.5"	55" to 63.5"	55" to 63.5"	55" to 63.5"	55" to 63.5"	56.25" to 70"	56.25" to 70"	56.25" to 70"	56.25" to 70"	55" to 69"	55" to 69"	55" to 69"	55" to 69"	57" to 71"	57" to 71"	57" to 71"	57" to 71"	44" to 61"	24"
<b>TECHNICAL (METRIC)</b>																			
RW (System)	47	51	54	59	49	51	54	59	49	51	54	59	49	51	54	59	49	33	52
RW (Panel)	55	60	60	64	58	60	60	64	58	60	60	64	58	60	60	64	58	36 <sup>(1)</sup>	NA
SAC (System)	-	-	-	-	Up to 0.65	-	-	-	Up to 0.65	-	-	-	Up to 0.65	-	-	-	Up to 0.65	-	-
Max Height (mm)	4,265	4,265	4,265	4,265	4,265	4,265	4,265	4,265	4,265	11,000	11,000	8,535	11,000	10,360	10,360	8,535	10,360	7,315	6,660
Max Length (mm)	14,600	Unlimited	Unlimited	Unlimited	Unlimited	Unlimited	Unlimited	Unlimited	Unlimited	Unlimited	Unlimited	Unlimited	Unlimited	Unlimited	Unlimited	Unlimited	Unlimited	Unlimited	Unlimited
Weight (kg/m²)	29.3	30.4	33.3	42	32.8	30.4	33.3	42	32.8	34.2	37.1	46	36.6	34.2	37.1	46	36.6	36.6	63.5
Available Finishes	Limited <sup>(3)</sup>	Various <sup>(1)</sup>	Various <sup>(1)</sup>	Various <sup>(1)</sup>	Fabric only <sup>(4)</sup>	Various <sup>(1)</sup>	Various <sup>(1)</sup>	Various <sup>(1)</sup>	Fabric only <sup>(4)</sup>	Various <sup>(1)</sup>	Various <sup>(1)</sup>	Various <sup>(1)</sup>	Fabric only <sup>(4)</sup>	Various <sup>(1)</sup>	Various <sup>(1)</sup>	Various <sup>(1)</sup>	Fabric only <sup>(4)</sup>	Various <sup>(2)</sup>	Various <sup>(2)</sup>
Ceiling space required for storage (mm) - (approx.)	615 to 820	615 to 820	615 to 820	615 to 820	615 to 820	615 to 865	615 to 865	615 to 865	615 to 865	615 to 1,960	615 to 1,960	615 to 1,530	615 to 1,960	615 to 1,960	615 to 1,960	615 to 1,530	615 to 1,960	965 to 1,450	915
Pocket Width (mm) - (approx.)	1,400 to 1,615	1,400 to 1,615	1,400 to 1,615	1,400 to 1,615	1,400 to 1,615	1,430 to 1,780	1,430 to 1,780	1,430 to 1,780	1,430 to 1,780	1,400 to 1,750	1,400 to 1,750	1,400 to 1,750	1,400 to 1,750	1,400 to 1,750	1,400 to 1,750	1,400 to 1,750	1,400 to 1,750	1,105 to 1,550	610
<b>ADDITIONAL FEATURES</b>																			
Auto-reverse	Y	Y	Y	Y	Y	Y	Y	Y	Y	Y	Y	Y	Y	Y	Y	Y	Y	Y	Y
Floor track	N	N	N	N	N	N	N	N	N	N	N	N	N	N	N	N	N	N	N
Wall tracks	N	N	N	N	N	N	N	N	N	N	N	N	N	N	N	N	N	Y	N
Obstruction Safety Sensor	Y	Y	Y	Y	Y	Y	Y	Y	Y	Y	Y	Y	Y	Y	Y	Y	Y	N	Y
Infrared Sensor	N	N	N	N	N	N	N	N	N	N	N	N	N	N	N	N	N	Y	N
Back-Up Operation	Y	Y	Y	Y	Y	Y	Y	Y	Y	Y	Y	Y	Y	Y	Y	Y	Y	Y	Y
Pocket Closure	N	N	N	N	N	Y	Y	Y	Y	N	N	N	N	Y	Y	Y	Y	N	N
<b>AVAILABLE OPTIONS</b>																			
10-year parts warranty	Y	Y	Y	Y	Y	Y	Y	Y	Y	Y	Y	Y	Y	Y	Y	Y	Y	Y	Y
Digital Touch Screen	Y	Y	Y	Y	Y	Included	Included	Included	Included	Y	Y	Y	Y	Included	Included	Included	Included	Y	Included
LED Lighting	Y	Y	Y	Y	Y	Y	Y	Y	Y	Y	Y	Y	Y	Y	Y	Y	Y	N	N

Please note that certain figures listed in the comparison chart were approximated for comparison purposes only.

For specific and complete technical information, REVIT Drawings and drawing details, please visit our website. [www.skyfold.com](http://www.skyfold.com)

<sup>(1)</sup> Finishes must not exceed 1/8" thick (3mm) or weigh more than 0.11 lbs/sq.ft. (0.54 kg/m²)

<sup>(2)</sup> Please refer to the technical section of our website for available finishes

<sup>(3)</sup> Available finishes include standard vinyl, fabric, paint or white marker board surface finish.

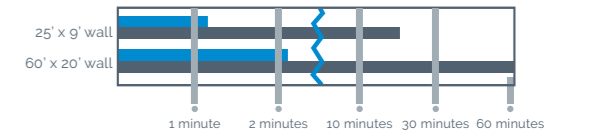
<sup>(4)</sup> Available in acoustically transparent fabric only

<sup>(5)</sup> Single laminated glass

### ACOUSTIC PERFORMANCE OF SKYFOLD WALLS AS COMPARED TO CONVENTIONAL OPERABLE WALLS



### SKYFOLD DEPLOYMENT TIME REQUIRED COMPARED TO CONVENTIONAL OPERABLE WALLS



### SKYFOLD® LIMITED WARRANTY

WORKMANSHIP: Parts & labour - 2 years or 5,000 cycles\*  
 Optional extended warranty on parts available  
 10 years or 5,000 cycles\*  
 Acoustical Performance - 10 years

\*First occurrence from date of shipment. Digital touch screen excluded from extended warranty.

## Zenith® Series Dimension Chart

### STANDARD DRIVE SYSTEM

PANELS ≤ 26.5" | PANELS ≤ 673mm

**IMPERIAL**

FINISHED CEILING "A"	1 BEAM HEIGHT "B"		ACOUSTIC BARRIER "C"	POCKET DEPTH "D"	POCKET WIDTH "E"	PANEL HEIGHT "F"	NUMBER OF PANELS HIGH	WALL THICKNESS	MAX PANEL LENGTH ALL ZENITH MODELS
	STANDARD OVERHEAD DRIVE	2 ALL OFFSET DRIVES							
7'-0" 7'-6" 8'-0"	9'-2 1/4" 9'-8 1/4" 10'-2 1/4"	8'-10 1/2" 9'-4 1/2" 9'-10 1/2"	8'-2 1/2" 8'-8 1/2" 9'-2 1/2"	14 1/2" 14 1/2" 14 1/2"	56 3/4" 59 3/4" 62 3/4"	23 1/2" 25" 26 1/2"	4 Panels High	11 3/4"	12'
8'-1" 8'-6" 9'-0" 9'-6" 10'-0"	10'-8 1/2" 11'-1 1/2" 11'-7 3/4" 12'-2" 12'-7"	10'-3 1/2" 10'-8 1/2" 11'-2 3/4" 11'-9" 12'-2"	9'-8" 10'-1" 10'-7 1/4" 11'-1 1/2" 11'-5 1/2"	20" 20" 20 1/4" 20 1/2" 18 1/2"	54 3/4" 56 3/4" 59 1/4" 61 3/4" 63 3/4"	22 3/16" 23 3/16" 24 7/16" 25 11/16" 26 1/2"	5 Panels High	11 3/4"	12'
10'-1" 10'-6" 11'-0" 11'-6" 12'-0"	12'-9" 13'-2 1/4" 13'-8 1/4" 14'-2 1/4" 14'-8 1/4"	12'-5 1/4" 12'-10 1/2" 13'-4 1/2" 13'-10 1/2" 14'-4 1/2"	11'-9 1/4" 12'-2 1/2" 12'-8 1/2" 13'-2 1/2" 13'-8 1/2"	20 1/4" 20 1/2" 20 1/2" 20 1/2" 20 1/2"	55" 56 3/4" 58 3/4" 60 3/4" 62 3/4"	22 5/8" 23 1/2" 24 1/2" 25 1/2" 26 1/2"	6 Panels High	11 3/4"	12'
12'-1" 12'-6" 13'-0" 13'-6" 14'-0"	15'-4 1/2" 15'-9 3/4" 16'-3" 16'-10" 17'-3 1/4"	14'-9 1/4" 15'-2 1/2" 15'-7 3/4" 16'-2 3/4" 16'-8"	14'-1 3/4" 14'-7" 15'-0 1/4" 15'-7 1/4" 15'-11 1/2"	25 3/4" 26" 25 1/4" 26 1/4" 24 1/2"	57 1/2" 59" 60 1/2" 62 1/2" 63 3/4"	23 3/8" 24 1/8" 24 7/8" 25 7/8" 26 1/2"	7 Panels High	11 3/4"	12'

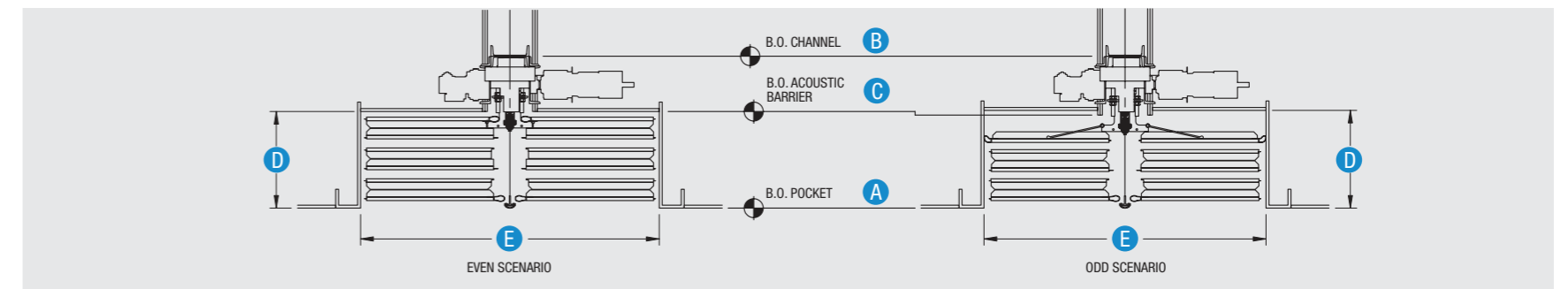
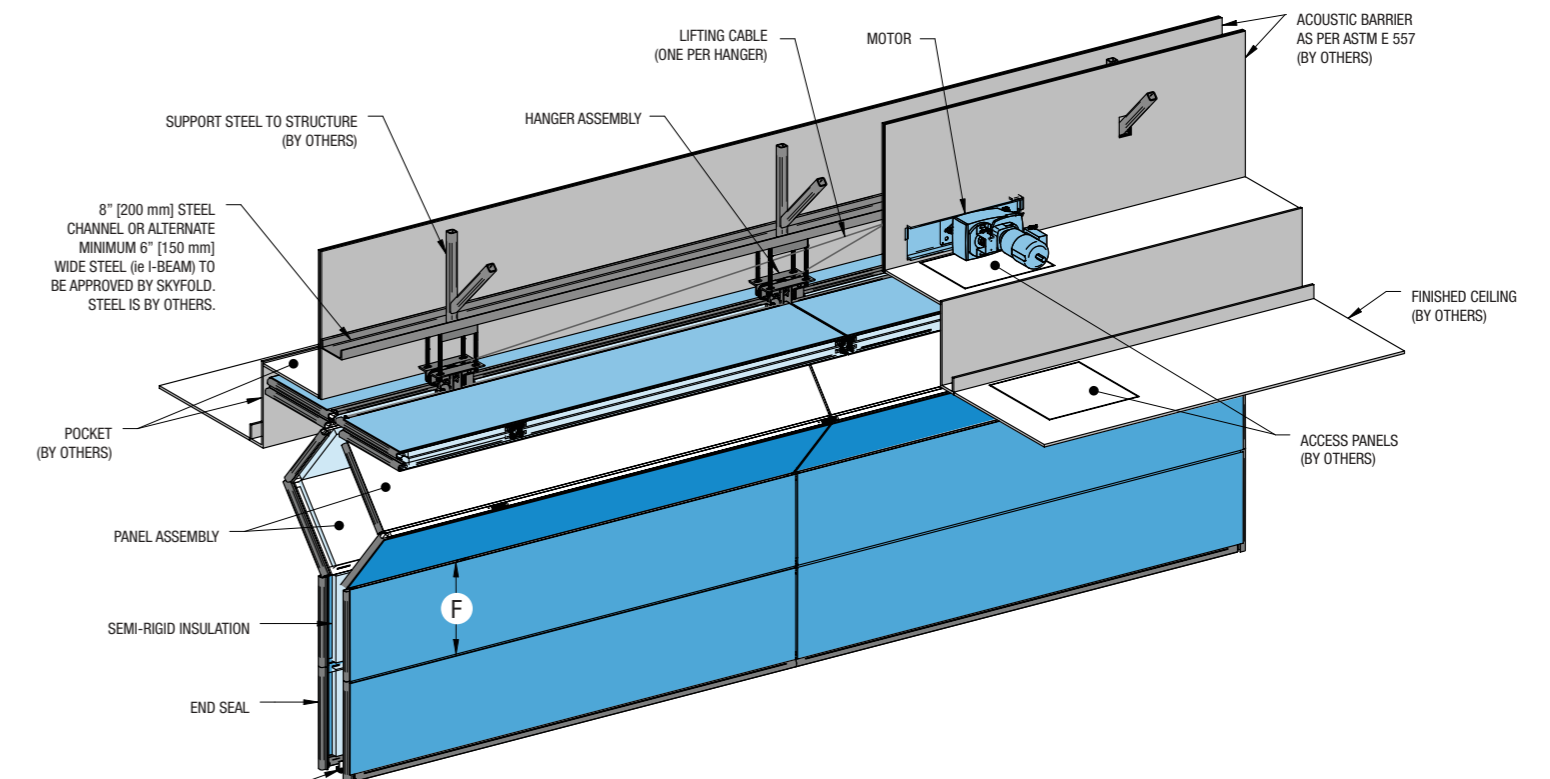
1 Beam heights indicated may vary with wall size and motor size.  
 2 Offset Drives include End-Mount, 90 Degree Offset, and Parallel Offset Drives  
 This table is not for construction purposes. Refer to shop drawings for final build to dimensions

**METRIC**

FINISHED CEILING "A"	1 BEAM HEIGHT "B"		ACOUSTIC BARRIER "C"	POCKET DEPTH "D"	POCKET WIDTH "E"	PANEL HEIGHT "F"	NUMBER OF PANELS HIGH	WALL THICKNESS	MAX PANEL LENGTH ALL ZENITH MODELS
	STANDARD OVERHEAD DRIVE	2 ALL OFFSET DRIVES							
2150 2200 2250 2300 2350 2400 2440	2855 2895 2955 3005 3055 3105 3130	2735 2775 2835 2885 2935 2985 3010	2530 2575 2630 2680 2735 2785 2810	380 375 380 385 380 385 370	1455 1475 1505 1530 1555 1580 1595	603 614 629 641 654 667 673	4 Panels High	300	3655
2450 2500 2550 2600 2650 2700 2750 2800 2850 2900 2950 3000 3050	3275 3325 3370 3420 3465 3515 3570 3615 3670 3720 3770 3825 3860	3125 3175 3220 3270 3315 3395 3420 3495 3520 3570 3620 3675 3710	2930 2980 3025 3075 3125 3165 3225 3270 3325 3375 3420 3475 3495	510 505 505 500 505 495 500 500 505 500 500 495 470	1385 1405 1420 1440 1465 1480 1500 1520 1545 1560 1580 1605 1610	560 570 579 589 600 608 619 629 640 649 659 670 673	5 Panels High	300	3655
3075 3200 3350 3500 3650 3660	3915 4045 4200 4350 4505 4505	3795 3925 4080 4230 4385 4385	3590 3725 3875 4025 4180 4180	515 525 525 530 520	1395 1440 1490 1545 1595 1595	575 597 622 648 673 673	6 Panels High	300	3655
3680 3800 3950 4100 4250 4265	4690 4810 4965 5120 5265 5265	4485 4605 4760 4915 5060 5085	4285 4415 4570 4725 4870 4870	630 640 645 650 645 630	1455 1490 1535 1580 1620 1620	591 608 630 652 673 673	7 Panels High	300	3655

1 Beam heights indicated may vary with wall size and motor size.  
 2 Offset Drives include End-Mount, 90 Degree Offset, and Parallel Offset Drives  
 This table is not for construction purposes. Refer to shop drawings for final build to dimensions

## Zenith® Series Technical Drawing



### Zenith® Premium Series Dimension Chart STANDARD DRIVE SYSTEM

**IMPERIAL**

FINISHED CEILING "A"	BEAM HEIGHT "B"	POCKET WIDTH "C"	PANEL HEIGHT "D"	NUMBER OF PANELS HIGH	WALL THICKNESS	MAX PANEL LENGTH ALL ZENITH PREMIUM MODELS
7'-0" 7'-6"	9'-2" 9'-8"	66 7/8" 70 7/8"	26 3/4" 28 3/4"	3 High + 1 Horizontal	11 3/4"	12'
7'-7" 8'-0" 8'-6" 9'-0" 9'-6" 10'-0"	9'-9" 10'-2 1/2" 10'-8 1/2" 11'-2 1/2" 11'-8 1/2" 12'-2 1/2"	56 3/4" 59 1/4" 62 1/4" 65 1/4" 68 1/4" 71 1/4"	21 11/16" 22 15/16" 24 7/16" 25 15/16" 27 7/16" 28 15/16"	4 High + 1 Horizontal	11 3/4"	12'
10'-1" 10'-6" 11'-0" 11'-6" 12'-0"	12'-9" 13'-2" 13'-8" 14'-4" 14'-10 1/4"	59 7/8" 61 7/8" 64 1/4" 66 5/8" 69 1/8"	23 1/4" 24 1/4" 25 7/16" 26 5/8" 27 7/8"	5 High + 1 Horizontal	11 3/4"	12'
12'-1" 12'-6" 13'-0" 13'-6" 14'-0"	14'-11 1/4" 15'-4" 15'-10" 16'-4" 16'-10"	60 61 5/8" 63 5/8" 65 5/8" 67 5/8"	23 5/16" 24 1/8" 25 1/8" 26 1/8" 27 1/8"	6 High + 1 Horizontal	11 3/4"	12'

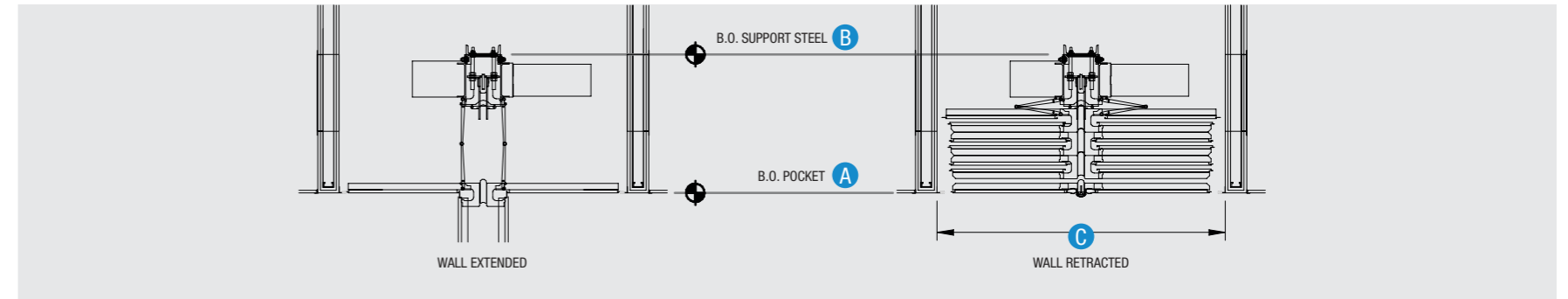
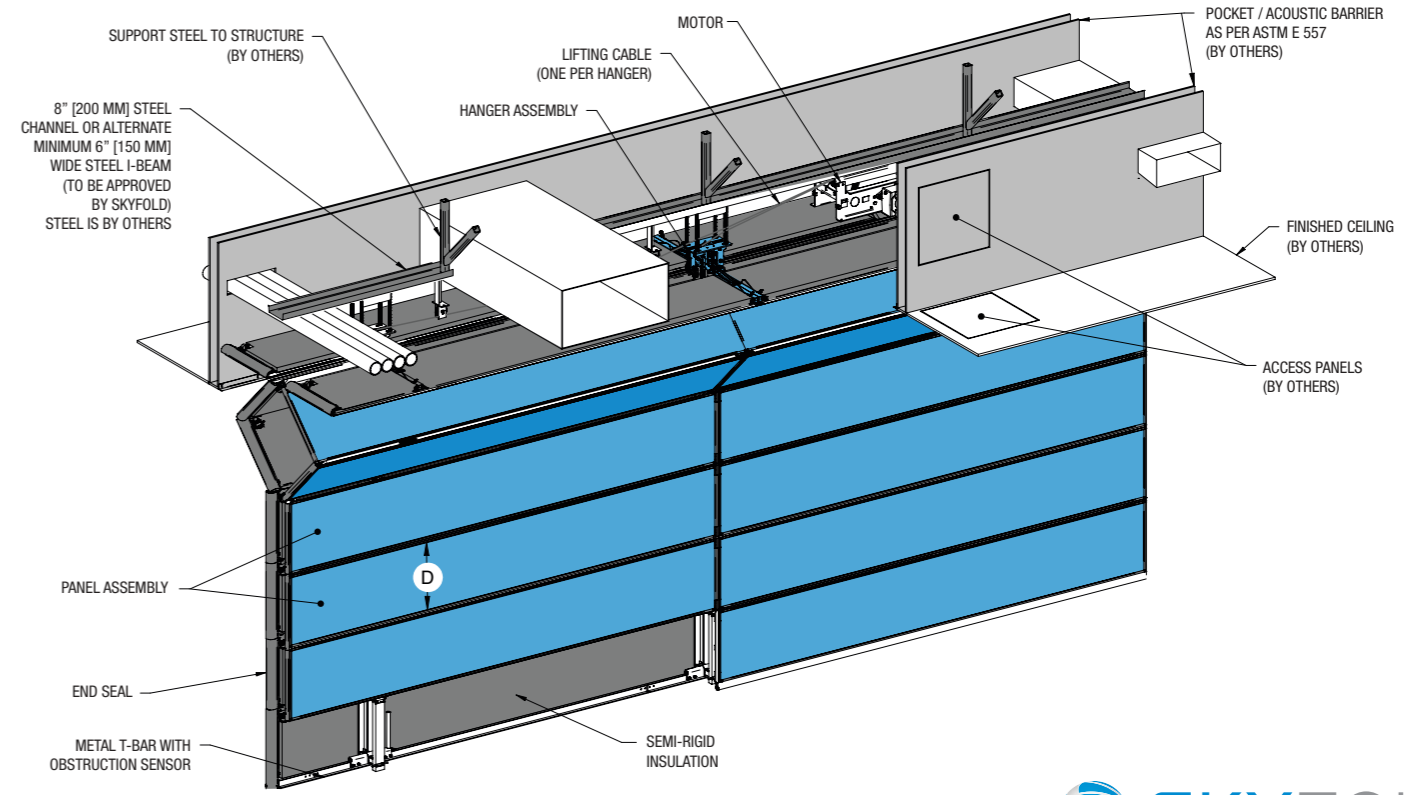
\* Beam heights indicated may vary with wall size and motor size.  
This table is not for construction purposes. Refer to shop drawings for final build to dimensions

**METRIC**

FINISHED CEILING "A"	BEAM HEIGHT "B"	POCKET WIDTH "C"	PANEL HEIGHT "D"	NUMBER OF PANELS HIGH	WALL THICKNESS	MAX PANEL LENGTH ALL ZENITH PREMIUM MODELS
2135 2285	2795 2945	1700 1800	679.5 730.3	3 High + 1 Horizontal	300	3657
2310 2440 2590 2745 2895 3050	2970 3110 3265 3415 3570 3720	1440 1505 1580 1655 1735 1810	550.9 582.6 620.7 658.8 696.9 735.0	4 High + 1 Horizontal	300	3657
3075 3200 3355 3505 3660	3885 4015 4165 4370 4530	1520 1570 1630 1690 1755	590.6 616.0 646.1 676.3 708.0	5 High + 1 Horizontal	300	3657
3685 3810 3960 4115 4265	4555 4675 4825 4980 5130	1525 1565 1615 1665 1720	592.1 612.8 638.2 663.6 689.0	6 High + 1 Horizontal	300	3657

\* Beam heights indicated may vary with wall size and motor size.  
This table is not for construction purposes. Refer to shop drawings for final build to dimensions.

### Zenith® Premium Series Technical Drawing



### Classic Series Dimension Chart STANDARD DRIVE SYSTEM PANELS ≤ 26.5" | PANELS ≤ 673mm

**IMPERIAL**

FINISHED CEILING "A"	BEAM HEIGHT "B"	ACOUSTIC BARRIER "C"	POCKET DEPTH "D"	POCKET WIDTH "E"	PANEL HEIGHT "F"	# OF PANELS HIGH	WALL THICKNESS	MAX PANEL LENGTH			
								51	NR	55	60
7'-0" 7'-6" 8'-0"	9'-2 1/4" 9'-8 1/4" 10'-2 1/4"	8'-2 1/2" 8'-8 1/2" 9'-2 1/2"	14 1/2" 14 1/2" 14 1/2"	56 3/4" 59 3/4" 62 3/4"	23 1/2" 25" 26 1/2"	4 Panels High	11 3/4"	12'	12'	12'	12'
8'-1" 8'-6" 9'-0" 9'-6" 10'-0"	10'-8 1/2" 11'-1 1/2" 11'-7 3/4" 12'-2" 12'-7"	9'-8" 10'-1" 10'-7 1/4" 11'-1 1/2" 11'-6 1/2"	20" 20" 20 1/4" 20 1/2" 19 1/2"	54 3/4" 56 3/4" 59 1/4" 61 3/4" 63 3/4"	22" 23" 24 1/4" 25 1/2" 26 1/2"	5 Panels High	11 3/4"	12'	12'	12'	12'
10'-1" 10'-6" 11'-0" 11'-6" 12'-0"	12'-9" 13'-2 1/4" 13'-8 1/4" 14'-2 1/4" 14'-8 1/4"	11'-9 1/4" 12'-2 1/2" 12'-8 1/2" 13'-2 1/2" 13'-8 1/2"	20 1/4" 20 1/2" 20 1/2" 20 1/2" 20 1/2"	55" 56 3/4" 58 3/4" 60 3/4" 62 3/4"	22 5/8" 23 1/2" 24 1/2" 25 1/2" 26 1/2"	6 Panels High	11 3/4"	12'	12'	12'	12'

\* Beam heights indicated may vary with wall size and motor size.  
This table is not for construction purposes. Refer to shop drawings for final build to dimensions.

**METRIC**

FINISHED CEILING "A"	BEAM HEIGHT "B"	ACOUSTIC BARRIER "C"	POCKET DEPTH "D"	POCKET WIDTH "E"	PANEL HEIGHT "F"	# OF PANELS HIGH	WALL THICKNESS	MAX PANEL LENGTH			
								51	NR	55	60
2150 2200 2250 2300 2350 2400 2440	2855 2895 2955 3005 3055 3105 3130	2530 2575 2630 2680 2730 2785 2810	380 375 380 380 380 385 370	1455 1480 1505 1530 1555 1585 1595	603 614 629 641 654 667 673	4 Panels High	300	3655	3655	3655	3655
2450 2500 2550 2600 2650 2700 2750 2800 2850 2900 2950 3000 3050	3275 3325 3370 3420 3465 3515 3570 3615 3670 3720 3770 3825 3860	2930 2980 3025 3075 3125 3170 3225 3275 3330 3375 3425 3480 3520	505 505 500 500 500 495 500 500 505 505 505 505 495	1385 1405 1425 1445 1460 1480 1505 1520 1545 1565 1585 1605 1620	556 565 575 584 594 603 614 624 635 645 655 665 673	5 Panels High	300	3655	3655	3655	3655
3075 3200 3350 3500 3650 3660	3915 4045 4200 4350 4505 4505	3590 3725 3875 4030 4180 4180	515 525 525 530 530 520	1400 1445 1495 1545 1595 1595	575 597 622 648 673 673	6 Panels High	300	3655	3655	3655	3655

\* Beam heights indicated may vary with wall size and motor size.  
This table is not for construction purposes. Refer to shop drawings for final build to dimensions.

### Classic Series Dimension Chart (Cont.) STANDARD DRIVE SYSTEM PANELS ≤ 26.5" | PANELS ≤ 673mm

**IMPERIAL**

FINISHED CEILING "A"	BEAM HEIGHT "B"	ACOUSTIC BARRIER "C"	POCKET DEPTH "D"	POCKET WIDTH "E"	PANEL HEIGHT "F"	# OF PANELS HIGH	WALL THICKNESS	MAX PANEL LENGTH			
								51	NR	55	60
12'-1" 12'-6" 13'-0" 13'-6" 14'-0"	15'-2 1/4" 15'-7 1/2" 16'-0 3/4" 16'-7 3/4" 17'-1"	14'-1 3/4" 14'-7" 15'-0 1/4" 15'-7 1/4" 16'-0 1/2"	25 3/4" 26" 25 1/4" 26 1/4" 25 1/2"	57 1/4" 58 3/4" 60 1/4" 62 1/4" 63 3/4"	23 1/4" 24" 24 3/4" 25 3/4" 26 1/2"	7 Panels High	11 3/4"	12'	12'	12'	12' for ≤ 3 panels wide, 10' for ≥ 4 panels wide
14'-1" 14'-6" 15'-0" 15'-6" 16'-0" 16'-1"	17'-2 1/4" 17'-7 1/4" 18'-1 1/4" 18'-7 1/4" 19'-1 1/4" 19'-2 1/4"	16'-2 1/2" 16'-7 1/2" 17'-1 1/2" 17'-7 1/2" 18'-1 1/2" 18'-2 1/2"	25 1/2" 25 1/2" 25 1/2" 25 1/2" 25 1/2" 25 1/2"	56 3/4" 58" 59 1/2" 61" 62 1/2" 62 3/4"	23 1/2" 24 1/8" 24 7/8" 25 5/8" 26 3/8" 26 1/2"	8 Panels High	11 3/4"	12'	12'	12'	12' for ≤ 3 panels wide, 10' for ≥ 4 panels wide
16'-2" 16'-6" 17'-0" 17'-6" 18'-0"	20'-1 3/4" 20'-6 1/4" 21'-1" 21'-7 3/4" 22'-0 1/4"	18'-8 1/2" 19'-1" 19'-7 3/4" 20'-2 1/2" 20'-7"	31 1/2" 32" 32 3/4" 33 1/2" 32"	58 3/4" 59 3/4" 61 1/4" 62 3/4" 63 3/4"	24" 24 1/2" 25 1/4" 26" 26 1/2"	9 Panels High	11 3/4"	12'	12'	12'	12' for ≤ 3 panels wide, 10' for ≥ 4 panels wide
18'-1" 18'-6" 19'-0" 19'-6" 20'-0"	22'-0 3/4" 22'-5 3/4" 23'-0" 23'-6 1/4" 24'-0 1/2"	20'-9 1/4" 21'-2 1/4" 21'-8 1/2" 22'-2 3/4" 22'-9"	32 1/4" 32 1/4" 32 1/2" 32 3/4" 33"	59" 60" 61 1/4" 62 1/2" 63 3/4"	24 1/8" 24 5/8" 25 1/4" 25 7/8" 26 1/2"	10 Panels High	11 3/4"	12'	12'	12'	10'

\* Beam heights indicated may vary with wall size and motor size.  
This table is not for construction purposes. Refer to shop drawings for final build to dimensions.

**METRIC**

FINISHED CEILING "A"	BEAM HEIGHT "B"	ACOUSTIC BARRIER "C"	POCKET DEPTH "D"	POCKET WIDTH "E"	PANEL HEIGHT "F"	NUMBER OF PANELS HIGH	WALL THICKNESS	MAX PANEL LENGTH			
								51	NR	55	60
3680 3800 3950 4100 4250 4265	4635 4755 4910 5065 5210 5235	4290 4415 4570 4725 4870 4890	635 640 645 650 645 650	1450 1485 1530 1575 1615 1620	587 605 627 649 670 673	7 Panels High	300	3655	3655	3655	3655 for ≤ 3 panels wide, 3050 for ≥ 4 panels wide
4295 4400 4550 4700 4850 4900	5265 5365 5520 5670 5825 5875	4940 5045 5195 5350 5500 5550	645 645 645 650 650 650	1445 1470 1505 1545 1585 1595	597 610 629 648 667 673	8 Panels High	300	3655	3655	3655	3655 for ≤ 3 panels wide, 3050 for ≥ 4 panels wide
4930 5000 5150 5300 5450 5485	6155 6230 6385 6530 6685 6715	5720 5790 5945 6090 6245 6275	815 815 820 815 820 815	1495 1515 1550 1580 1615 1620	611 619 637 652 670 673	9 Panels High	300	3655	3655	3655	3655 for ≤ 3 panels wide, 3050 for ≥ 4 panels wide
5510 5600 5750 5900 6050 6095	6725 6820 6965 7125 7265 7330	6330 6430 6570 6730 6870 6935	820 830 820 830 820 840	1500 1520 1550 1580 1610 1620	613 622 637 652 667 673	10 Panels High	300	3655	3655	3655	3050

\* Beam heights indicated may vary with wall size and motor size.  
This table is not for construction purposes. Refer to shop drawings for final build to dimensions.

**Classic Series** Dimension Chart (Cont.)

STANDARD DRIVE SYSTEM  
 PANELS ≤ 26.5" | PANELS ≤ 673mm

**IMPERIAL**

FINISHED CEILING "A"	BEAM HEIGHT "B"	ACOUSTIC BARRIER "C"	POCKET DEPTH "D"	POCKET WIDTH "E"	PANEL HEIGHT "F"	# OF PANELS HIGH	WALL THICKNESS	MAX PANEL LENGTH			
								51	NR	55	60
20'-1" 20'-6" 21'-0" 21'-6" 22'-0"	24'-8 1/4" 24'-11" 25'-7 1/4" 26'-0 3/4" 26'-6 1/4"	23'-3" 23'-5 3/4" 24'-2" 24'-7 1/2" 25'-1"	39" 36 3/4" 39" 38 1/2" 38"	59 3/4" 60 1/4" 61 3/4" 62 3/4" 63 3/4"	24 1/2" 24 3/4" 25 1/2" 26" 26 1/2"	11 Panels High	11 3/4"	12'	12'	12'	8'
22'-1" 22'-6" 23'-0" 23'-6" 24'-0" 24'-2"	26'-5 3/4" 26'-11" 27'-5" 27'-11" 28'-5" 28'-6 1/2"	25'-2 1/4" 25'-7 1/2" 26'-1 1/2" 26'-7 1/2" 27'-1 1/2" 27'-3"	37 1/4" 37 1/2" 37 1/2" 37 1/2" 37 1/2" 37"	59 5/8" 60 1/2" 61 1/2" 62 1/2" 63 1/2" 63 3/4"	24 7/16" 24 7/8" 25 3/8" 25 7/8" 26 3/8" 26 1/2"	12 Panels High	11 3/4"	12'	10'	10'	8'
24'-3" 24'-6" 25'-0" 25'-6" 26'-0"	29'-2 1/2" 29'-5 3/4" 30'-0 1/4" 30'-6 3/4" 31'-1 1/4"	27'-8 1/4" 27'-11 1/2" 28'-6" 29'-0 1/2" 29'-7"	42 1/4" 42 1/2" 43" 43 1/2" 44"	61 1/4" 61 3/4" 62 3/4" 63 3/4" 64 3/4"	24 3/4" 25" 25 1/2" 26" 26 1/2"	13 Panels High	11 3/4"	10'	10'	10'	8'
26'-1" 26'-6" 27'-0" 27'-6" 28'-0" 28'-2"	31'-0 3/4" 31'-6" 31'-11 1/4" 32'-6 1/4" 32'-11 1/2" 33'-1 1/4"	29'-8 1/2" 30'-1 3/4" 30'-7" 31'-2" 31'-7 1/4" 31'-9"	43 1/2" 43 3/4" 43" 44" 43 1/4" 43"	61 1/4" 62" 62 3/4" 63 3/4" 64 1/2" 64 3/4"	24 3/4" 25 1/8" 25 1/2" 26" 26 3/8" 26 1/2"	14 Panels High	11 3/4"	10'	8'	8'	8'

\* Beam heights indicated may vary with wall size and motor size.  
 This table is not for construction purposes. Refer to shop drawings for final build to dimensions.

**METRIC**

FINISHED CEILING "A"	BEAM HEIGHT "B"	ACOUSTIC BARRIER "C"	POCKET DEPTH "D"	POCKET WIDTH "E"	PANEL HEIGHT "F"	# OF PANELS HIGH	WALL THICKNESS	MAX PANEL LENGTH			
								51	NR	55	60
6120 6200 6350 6500 6650 6705	7525 7560 7720 7860 8015 8085	7090 7125 7280 7420 7575 7645	995 950 955 945 950 965	1520 1525 1555 1580 1610 1620	622 625 640 652 667 673	11 Panels High	300	3655	3655	3655	2440
6730 6800 6950 7100 7250 7365	8070 8150 8300 8455 8605 8700	7680 7755 7905 8060 8210 8305	950 955 955 960 960 940	1515 1530 1555 1580 1605 1620	621 627 640 652 665 673	12 Panels High	300	3655	3050	3050	2440
7400 7550 7700 7850 7925	8925 9070 9235 9380 9480	8460 8605 8770 8915 9020	1085 1080 1095 1090 1120	1560 1585 1610 1630 1645	630 641 654 665 673	13 Panels High	300	3050	3050	3050	2440
7950 8000 8150 8300 8450 8585	9470 9515 9670 9825 9980 10090	9055 9100 9255 9410 9570 9680	1105 1100 1105 1110 1120 1095	1555 1565 1585 1610 1630 1645	629 632 643 654 665 673	14 Panels High	300	3050	2440	2440	2440

\* Beam heights indicated may vary with wall size and motor size.  
 This table is not for construction purposes. Refer to shop drawings for final build to dimensions.

**Classic Series** Dimension Chart (Cont.)

STANDARD DRIVE SYSTEM  
 PANELS ≤ 26.5" | PANELS ≤ 673mm

**IMPERIAL**

FINISHED CEILING "A"	BEAM HEIGHT "B"	ACOUSTIC BARRIER "C"	POCKET DEPTH "D"	POCKET WIDTH "E"	PANEL HEIGHT "F"	# OF PANELS HIGH	WALL THICKNESS	MAX PANEL LENGTH			
								51	NR	55	60
28'-3" 28'-6" 29'-0" 29'-6" 30'-0"	33'-8 3/4" 34'-0" 34'-7 1/2" 34'-11 1/4" 35'-6 3/4"	32'-2 1/2" 32'-6 1/4" 33'-1 3/4" 33'-5 1/2" 34'-1"	48 1/2" 49 1/4" 50 3/4" 48 1/2" 50"	61 3/4" 62 1/4" 63 1/4" 63 3/4" 64 3/4"	25" 25 1/4" 25 3/4" 26" 26 1/2"	15 Panels High	11 3/4"	10'	8'	8'	N/A
30'-1" 30'-6" 31'-0" 31'-6" 32'-0" 32'-2"	35'-9" 36'-2" 36'-8" 37'-2" 37'-8" 37'-10"	34'-2" 34'-7" 35'-1" 35'-7" 36'-1" 36'-3"	49" 49" 49" 49" 49" 49"	61 5/8" 62 1/4" 63" 63 3/4" 64 1/2" 64 3/4"	24 15/16" 25 1/4" 25 5/8" 26" 26 3/8" 26 1/2"	16 Panels High	11 3/4"	8'	8'	8'	N/A
32'-3" 32'-6" 33'-0" 33'-6" 34'-0" 34'-2"	38'-5 1/2" 38'-9 3/4" 39'-2" 39'-6 1/4" 40'-2 3/4" 40'-2 3/4"	36'-9 3/4" 37'-2" 37'-6 1/4" 37'-10 1/2" 38'-7" 38'-7"	55 3/4" 57" 55 1/4" 53 1/2" 56" 54"	62 1/4" 62 3/4" 63 1/4" 63 3/4" 64 3/4" 64 3/4"	25 1/4" 25 1/2" 25 3/4" 26" 26 1/2" 26 1/2"	17 Panels High	11 3/4"	8'	8'	8'	N/A
34'-3" 34'-6" 35'-0" 35'-6" 36'-0"	40'-5 1/2" 40'-10" 41'-4 3/4" 41'-9 1/4" 42'-4"	38'-8 1/4" 39'-0 3/4" 39'-7 1/2" 40'-0" 40'-6 3/4"	53 1/4" 54 3/4" 55 1/2" 54" 54 3/4"	62" 62 1/2" 63 1/4" 63 3/4" 64 1/2"	25 1/8" 25 3/8" 25 3/4" 26" 26 3/8"	18 Panels High	11 3/4"	8'	7'	7'	N/A

\* Beam heights indicated may vary with wall size and motor size.  
 This table is not for construction purposes. Refer to shop drawings for final build to dimensions.

**METRIC**

FINISHED CEILING "A"	BEAM HEIGHT "B"	ACOUSTIC BARRIER "C"	POCKET DEPTH "D"	POCKET WIDTH "E"	PANEL HEIGHT "F"	# OF PANELS HIGH	WALL THICKNESS	MAX PANEL LENGTH			
								51	NR	55	60
8600 8750 8900 9050 9145	10270 10410 10555 10720 10840	9820 9960 10105 10270 10390	1245 1235 1230 1245 1270	1570 1590 1610 1630 1645	635 645 654 665 673	15 Panels High	300	3050	2440	2440	N/A
9170 9200 9350 9500 9650 9800	10900 10925 11075 11230 11380 11535	10415 10440 10595 10745 10900 11050	1245 1240 1245 1245 1250 1250	1565 1570 1590 1610 1625 1645	633 635 645 654 664 673	16 Panels High	300	2440	2440	2440	N/A
9830 9950 10100 10250 10400 10415	11725 11805 11940 12100 12265 12265	11220 11305 11440 11600 11760 11760	1415 1380 1365 1375 1385 1370	1585 1590 1610 1625 1645 1645	641 646 654 664 673 673	17 Panels High	300	2440	2440	2440	N/A
10440 10550 10700 10850 10975 11000	12335 12475 12620 12760 12905 12960	11795 11935 12080 12220 12365 12420	1355 1385 1380 1370 1390 1420	1575 1590 1610 1625 1640 1645	638 646 654 662 670 673	18 Panels High	300	2440	2135	2135	N/A

\* Beam heights indicated may vary with wall size and motor size.  
 This table is not for construction purposes. Refer to shop drawings for final build to dimensions.

### Classic Series Dimension Chart (Cont.) MICRO DRIVE SYSTEM 4 PANELS HIGH

**IMPERIAL**

FINISHED CEILING "A"	BEAM HEIGHT "B"	ACOUSTIC BARRIER "C"	POCKET DEPTH "D"	POCKET WIDTH "E"	PANEL HEIGHT "F"	WALL THICKNESS
7'-0"	8'-11 1/4"	8'-2 1/4"	14 1/4"	56 5/8"	23 7/16"	11 3/4"
7'-1"	9'-0 1/4"	8'-3 1/4"	14 1/4"	57 1/8"	23 11/16"	11 3/4"
7'-2"	9'-1 1/4"	8'-4 1/4"	14 1/4"	57 5/8"	23 15/16"	11 3/4"
7'-3"	9'-2 1/4"	8'-5 1/4"	14 1/4"	58 1/8"	24 3/16"	11 3/4"
7'-4"	9'-3 1/4"	8'-6 1/4"	14 1/4"	58 5/8"	24 7/16"	11 3/4"
7'-5"	9'-4 1/4"	8'-7 1/4"	14 1/4"	59 1/8"	24 11/16"	11 3/4"
7'-6"	9'-5 1/4"	8'-8 1/4"	14 1/4"	59 5/8"	24 15/16"	11 3/4"
7'-7"	9'-6 1/4"	8'-9 1/4"	14 1/4"	60 1/8"	25 3/16"	11 3/4"
7'-8"	9'-7 1/4"	8'-10 1/4"	14 1/4"	60 5/8"	25 7/16"	11 3/4"
7'-9"	9'-8 1/4"	8'-11 1/4"	14 1/4"	61 1/8"	25 11/16"	11 3/4"
7'-10"	9'-9 1/4"	9'-0 1/4"	14 1/4"	61 5/8"	25 15/16"	11 3/4"
7'-11"	9'-10 1/4"	9'-1 1/4"	14 1/4"	62 1/8"	26 3/16"	11 3/4"
8'-0"	9'-11 1/4"	9'-2 1/4"	14 1/4"	62 5/8"	26 7/16"	11 3/4"
8'-1"	10'-0 1/4"	9'-3 1/4"	14 1/4"	63 1/8"	26 11/16"	11 3/4"
8'-2"	10'-1 1/4"	9'-4 1/4"	14 1/4"	63 5/8"	26 15/16"	11 3/4"
8'-3"	10'-2 1/4"	9'-5 1/4"	14 1/4"	64 1/8"	27 3/16"	11 3/4"
8'-4"	10'-3 1/4"	9'-6 1/4"	14 1/4"	64 5/8"	27 7/16"	11 3/4"
8'-5"	10'-4 1/4"	9'-7 1/4"	14 1/4"	65 1/8"	27 11/16"	11 3/4"
8'-6"	10'-5 1/4"	9'-8 1/4"	14 1/4"	65 5/8"	27 15/16"	11 3/4"
8'-7"	10'-6 1/4"	9'-9 1/4"	14 1/4"	66 1/8"	28 3/16"	11 3/4"
8'-8"	10'-7 1/4"	9'-10 1/4"	14 1/4"	66 5/8"	28 7/16"	11 3/4"
8'-9"	10'-8 1/4"	9'-11 1/4"	14 1/4"	67 1/8"	28 11/16"	11 3/4"
8'-10"	10'-9 1/4"	10'-0 1/4"	14 1/4"	67 5/8"	28 15/16"	11 3/4"
8'-11"	10'-10 1/4"	10'-1 1/4"	14 1/4"	68 1/8"	29 3/16"	11 3/4"
9'-0"	10'-11 1/4"	10'-2 1/4"	14 1/4"	68 5/8"	29 7/16"	11 3/4"

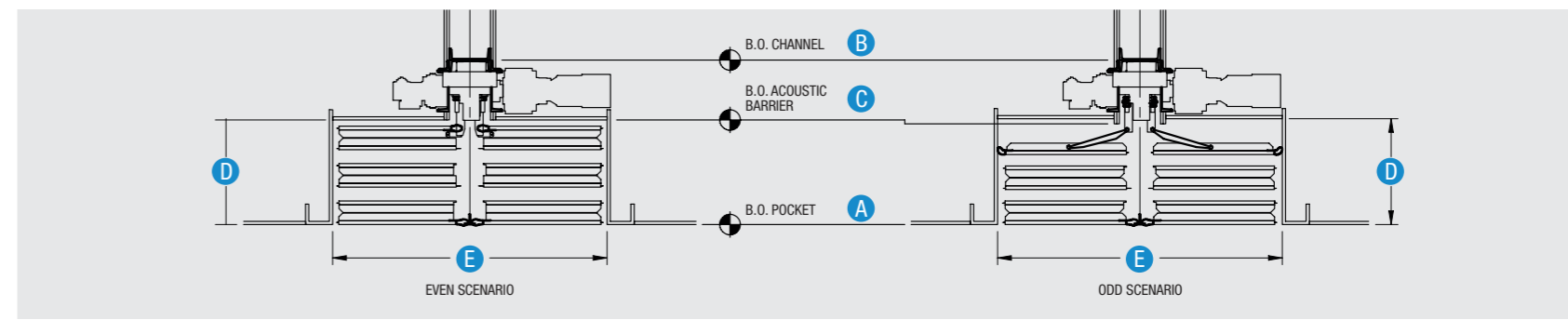
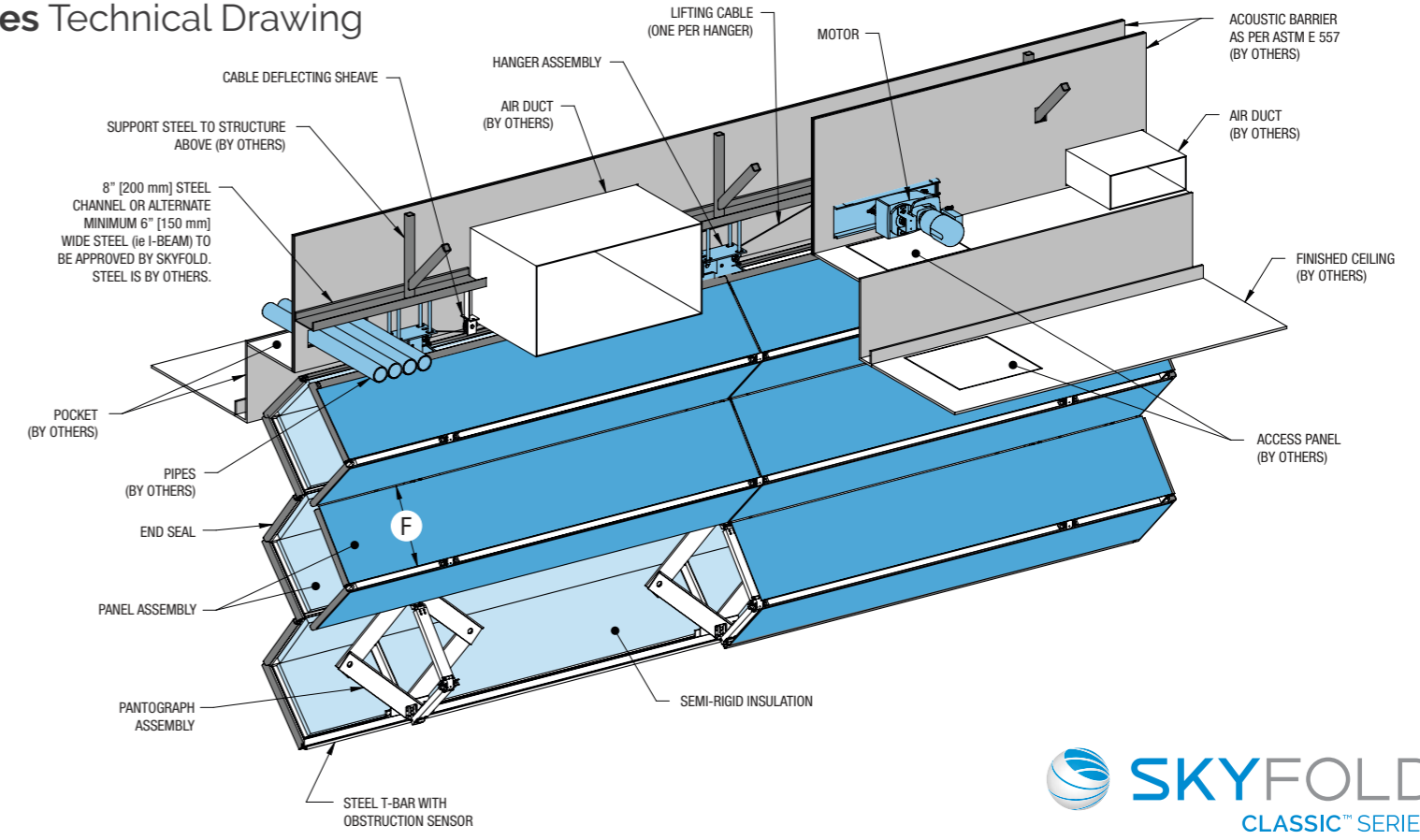
Walls ranging in length from 11'-10" long to 36'-0" long.  
Walls greater than 24'-0" long - add an additional 1" onto the beam & hanger adjustment.  
**\* Beam heights indicated may vary with wall size and motor size.**  
This table is not for construction purposes. Refer to shop drawings for final build to dimensions.

**METRIC**

FINISHED CEILING "A"	BEAM HEIGHT "B"	ACOUSTIC BARRIER "C"	POCKET DEPTH "D"	POCKET WIDTH "E"	PANEL HEIGHT "F"	WALL THICKNESS
2135	2750	2500	365	1440	595	300
2160	2775	2525	365	1450	602	300
2185	2800	2550	365	1465	608	300
2210	2825	2575	365	1480	614	300
2235	2850	2600	365	1490	621	300
2260	2875	2625	365	1505	627	300
2285	2900	2650	365	1515	633	300
2310	2925	2675	365	1530	640	300
2335	2950	2700	365	1540	646	300
2360	2975	2725	365	1555	653	300
2390	3005	2755	365	1565	659	300
2415	3030	2780	365	1580	665	300
2440	3055	2805	365	1590	672	300
2465	3080	2830	365	1605	678	300
2490	3105	2855	365	1615	684	300
2515	3130	2880	365	1630	691	300
2540	3155	2905	365	1640	697	300
2565	3180	2930	365	1655	703	300
2590	3205	2955	365	1665	710	300
2615	3230	2980	365	1680	716	300
2640	3255	3005	365	1690	722	300
2665	3280	3030	365	1705	729	300
2690	3305	3055	365	1720	735	300
2715	3330	3080	365	1730	741	300
2740	3355	3105	365	1745	748	300

Measurements are based on a C200x80. Walls ranging in length from 3605mm long to 10980mm long.  
Walls greater than 7315mm long - add an additional 25mm onto the beam height.  
**\* Beam heights indicated may vary with wall size and motor size.**  
This table is not for construction purposes. Refer to shop drawings for final build to dimensions.

### Classic Series Technical Drawing



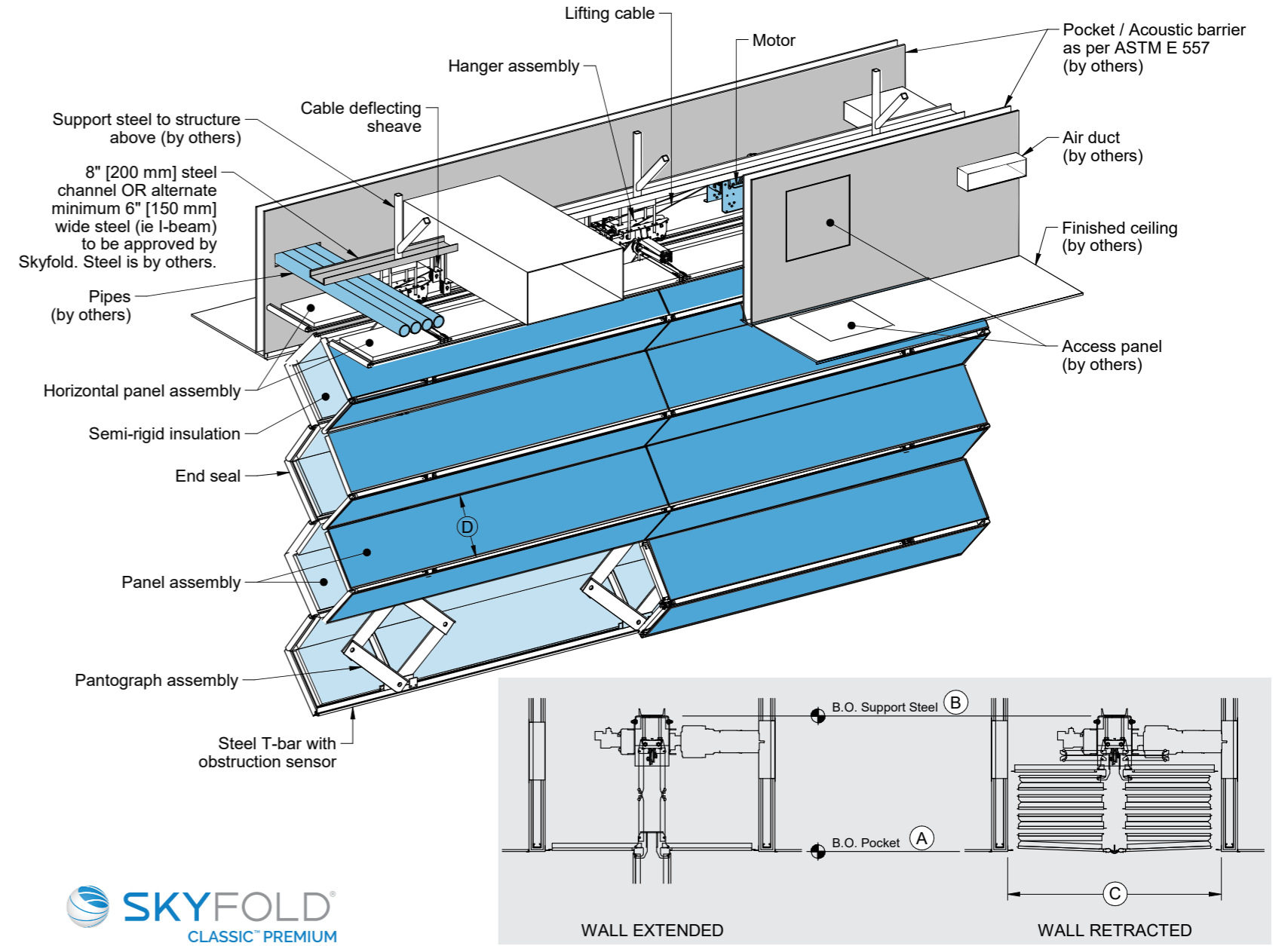
## Classic Premium Series Dimension Chart

### CLASSIC PREMIUM SERIES

IMPERIAL												METRIC											
DIMS FOR STANDARD DRIVE SYSTEM - PANELS ≤ 26.5625"												DIMS FOR STANDARD DRIVE SYSTEM - PANELS ≤ 675mm											
FINISHED CEILING "A"	BEAM HEIGHT "B"	POCKET WIDTH "C"	PANEL HEIGHT "D"	NUMBER OF PANELS HIGH	WALL THICKNESS	TOP SEAL (FIXED N/A)	FLOOR SEAL	MAX PANEL LENGTH				FINISHED CEILING "A"	BEAM HEIGHT "B"	POCKET WIDTH "C"	PANEL HEIGHT "D"	NUMBER OF PANELS HIGH	WALL THICKNESS	TOP SEAL (FIXED N/A)	FLOOR SEAL	MAX PANEL LENGTH			
								CLASSIC 51	CLASSIC 55	CLASSIC 59	CLASSIC 60									CLASSIC 51	CLASSIC 55	CLASSIC 59	CLASSIC 60
14' - 1"	17' - 1.5"	60.125	23.3125	"7 High + 1 Horizontal"	11 3/4"	0.875	2	12'	12'	12'	12'	4295	5235	1530	593.73	"7 High + 1 Horizontal"	300	22.2	50.8	3655	3655	3655	3655
14' - 6"	17' - 6.75"	61.625	24.0625					4350	5290	1545	601.66												
15' - 0"	18' - 0.5"	63.25	24.875					4400	5335	1560	608.01												
15' - 6"	18' - 6.75"	65	25.75					4550	5490	1605	630.24												
15' - 11"	19' - 0"	66.5	26.5					4700	5630	1645	650.88												
16' - 0"	19' - 6.5"	60.25	23.375	"8 High + 1 Horizontal"	11 3/4"	0.875	2	12'	12'	12'	12'	4960	6030	1550	603.25	"8 High + 1 Horizontal"	300	22.2	50.8	3655	3655	3655	3655
16' - 6"	20' - 0.5"	61.75	24.125					4900	5980	1535	596.90												
17' - 0"	20' - 6.5"	63.25	24.875					5000	6070	1560	608.01												
17' - 6"	21' - 0.5"	64.75	25.625					5150	6220	1595	627.06												
18' - 0"	21' - 6.5"	66.25	26.375					5300	6370	1635	646.11												
18' - 1"	21' - 7.5"	66.5	26.5	5450	6525	1675	665.16																
18' - 2"	21' - 8.375"	60.5	23.5	"9 High + 1 Horizontal"	11 3/4"	0.875	2	12'	12'	12'	12'	5550	6630	1540	598.49	"9 High + 1 Horizontal"	300	22.2	50.8	3655	3655	3655	3050
18' - 6"	22' - 0.25"	61.375	23.9375					5600	6670	1550	603.25												
19' - 0"	22' - 6.5"	62.75	24.625					5750	6830	1585	620.71												
19' - 6"	23' - 0.25"	64	25.25					5900	6970	1615	636.59												
20' - 0"	23' - 6.25"	65.375	25.9375					6050	7130	1650	654.05												
20' - 5"	23' - 11.5"	66.5	26.5	6200	7270	1685	669.93																
20' - 6"	24' - 5.75"	61.5	24	"10 High + 1 Horizontal"	11 3/4"	0.875	2	12'	12'	12'	10'	6240	7450	1560	608.01	"10 High + 1 Horizontal"	300	22.2	50.8	3655	3655	3655	2440
21' - 0"	24' - 11.625"	62.625	24.5625					6350	7560	1580	619.13												
21' - 6"	25' - 5.75"	63.875	25.1875					6500	7720	1615	635.00												
22' - 0"	26' - 0"	65.125	25.8125					6650	7860	1640	649.29												
22' - 6"	26' - 5.625"	66.25	26.375					6800	8020	1675	665.16												
22' - 7"	26' - 7"	66.5	26.5	6990	8100	1690	673.10																
22' - 8"	26' - 8"	61.625	24.0625	"11 High + 1 Horizontal"	11 3/4"	0.875	2	12'	12'	12'	8'	6900	8110	1560	609.60	"11 High + 1 Horizontal"	300	22.2	50.8	3655	3050	3050	2440
23' - 0"	26' - 11.5"	62.25	24.375					7100	8320	1600	628.65												
23' - 6"	27' - 5.75"	63.375	24.9375					7250	8460	1625	641.35												
24' - 0"	28' - 0"	64.5	25.5					7400	8620	1655	655.64												
24' - 6"	28' - 6.125"	65.625	26.0625					7550	8760	1680	668.34												
24' - 11"	28' - 11"	66.5	26.5	7600	8810	1690	673.10																
25' - 0"	29' - 5.75"	62.375	24.4375	"12 High + 1 Horizontal"	11 3/4"	0.875	2	12'	10'	10'	8'	7610	8965	1580	619.13	"12 High + 1 Horizontal"	300	22.2	50.8	3050	3050	3050	2440
25' - 6"	29' - 11.75"	63.375	24.9375					7700	9060	1595	627.06												
26' - 0"	30' - 5.75"	64.375	25.4375					7850	9210	1620	639.76												
26' - 6"	30' - 11.75"	65.375	25.9375					8000	9365	1650	652.46												
27' - 0"	31' - 5.75"	66.375	26.4375					8150	9495	1670	663.58												
27' - 1"	31' - 6.5"	66.5	26.5	8260	9610	1690	673.10																
27' - 2"	31' - 7.5"	62.375	24.4375	"13 High + 1 Horizontal"	11 3/4"	0.875	2	10'	10'	10'	8'	8270	9620	1580	619.13	"13 High + 1 Horizontal"	300	22.2	50.8	3050	2440	2440	2440
27' - 6"	31' - 11.75"	63	24.75					8450	9805	1610	633.41												
28' - 0"	32' - 5.5"	63.875	25.1875					8600	9950	1630	644.53												
28' - 6"	32' - 11"	64.75	25.625					8750	10115	1655	657.23												
29' - 0"	33' - 5.5"	65.75	26.125					8900	10260	1680	668.34												
29' - 5"	33' - 10.5"	66.5	26.5	8975	10320	1690	673.10																
29' - 6"	34' - 4.625"	62.875	24.6875	"14 High + 1 Horizontal"	11 3/4"	0.875	2	10'	8'	8'	8'	8980	10480	1595	627.06	"14 High + 1 Horizontal"	300	22.2	50.8	3050	2440	2440	N/A
30' - 0"	34' - 10.625"	63.75	25.125					9150	10655	1620	639.76												
30' - 6"	35' - 4.875"	64.625	25.5625					9300	10790	1640	649.29												
31' - 0"	35' - 10.875"	65.5	26					9450	10945	1665	660.40												
31' - 6"	36' - 5.125"	66.375	26.4375					9600	11100	1685	671.51												
31' - 7"	36' - 5.875"	66.5	26.5	9635	11120	1690	673.10																
31' - 8"	36' - 6.75"	62.875	24.6875	"15 High + 1 Horizontal"	11 3/4"	0.875	2	10'	8'	8'	8'	9640	11145	1595	627.06	"15 High + 1 Horizontal"	300	22.2	50.8	2440	2440	2440	N/A
32' - 0"	36' - 11.5"	63.5	25					9800	11310	1620	638.18												
32' - 6"	37' - 5"	64.25	25.375					9950	11450	1640	647.70												
33' - 0"	37' - 10.75"	65	25.75					10100	11595	1655	657.23												
33' - 6"	38' - 5.25"	65.875	26.1875					10250	11740	1675	666.75												
33' - 11"	38' - 10"	66.5	26.5	10360	11860	1690	674.69																

\* Beam heights indicated may vary with wall size and motor size. This table is not for construction purposes. Refer to shop drawings for final build to dimensions

## Classic Premium Series Technical Drawing



\* Beam heights indicated may vary with wall size and motor size. This table is not for construction purposes. Refer to shop drawings for final build to dimensions

### Mirage Typical Dimensions Chart

**IMPERIAL**

CEILING HEIGHT "A"	*BEAM HEIGHT "B"	TOP OF POCKET "C"	POCKET HEIGHT "D"	POCKET WIDTH "E"	GRID HEIGHT "F"	NUMBER OF PANELS HIGH
8' - 0"	11' - 2"	10' - 1 3/8"	25 3/8"	43 3/8"	19 3/16"	6 Panels High
9' - 0"	12' - 2"	11' - 1 3/8"	25 3/8"	47 3/8"	21 3/16"	
10' - 0"	13' - 2"	12' - 1 3/8"	25 3/8"	51 3/8"	23 3/16"	
11' - 0"	14' - 2"	13' - 1 3/8"	25 3/8"	55 3/8"	25 3/16"	
11' - 3"	14' - 5"	13' - 4 3/8"	25 3/8"	56 3/8"	25 11/16"	
11' - 4"	14' - 11"	13' - 10 1/4"	30 1/4"	45"	20"	8 Panels High
12' - 0"	15' - 7"	14' - 6 1/4"	30 1/4"	47"	21"	
13' - 0"	16' - 7"	15' - 6 1/4"	30 1/4"	50"	22 1/2"	
14' - 0"	17' - 7"	16' - 6 1/4"	30 1/4"	53"	24"	
15' - 0"	18' - 7"	17' - 6 1/4"	30 1/4"	56"	25 1/2"	
15' - 1 1/2"	18' - 8 1/2"	17' - 7 3/4"	30 1/4"	56 3/8"	25 11/16"	
15' - 2"	19' - 5"	18' - 2 5/8"	36 5/8"	49 3/8"	21 3/16"	10 Panels High
16' - 0"	20' - 3"	19' - 0 5/8"	36 5/8"	51 3/8"	22 3/16"	
17' - 0"	21' - 3"	20' - 0 1/2"	36 1/2"	53 3/4"	23 3/8"	
18' - 0"	22' - 4"	21' - 1 5/8"	37 5/8"	56 3/8"	24 11/16"	
18' - 10"	23' - 2"	21' - 11 5/8"	37 5/8"	58 3/8"	25 11/16"	
18' - 11"	23' - 8"	22' - 5 1/4"	42 1/4"	50 3/4"	21 7/8"	12 Panels High
19' - 0"	23' - 9"	22' - 6 3/4"	42 3/4"	51"	22"	
20' - 0"	24' - 9"	23' - 6 3/4"	42 3/4"	53"	23"	
21' - 0"	25' - 9"	24' - 6 3/4"	42 3/4"	55"	24"	
22' - 0"	26' - 9"	25' - 6 3/4"	42 3/4"	57"	25"	
23' - 0"	27' - 9"	26' - 6 3/4"	42 3/4"	59"	26"	
24' - 0"	28' - 9"	27' - 6 3/4"	42 3/4"	61"	27"	

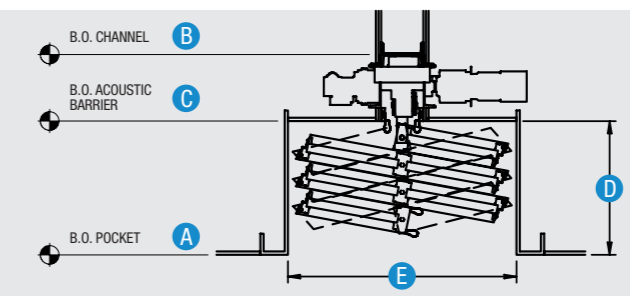
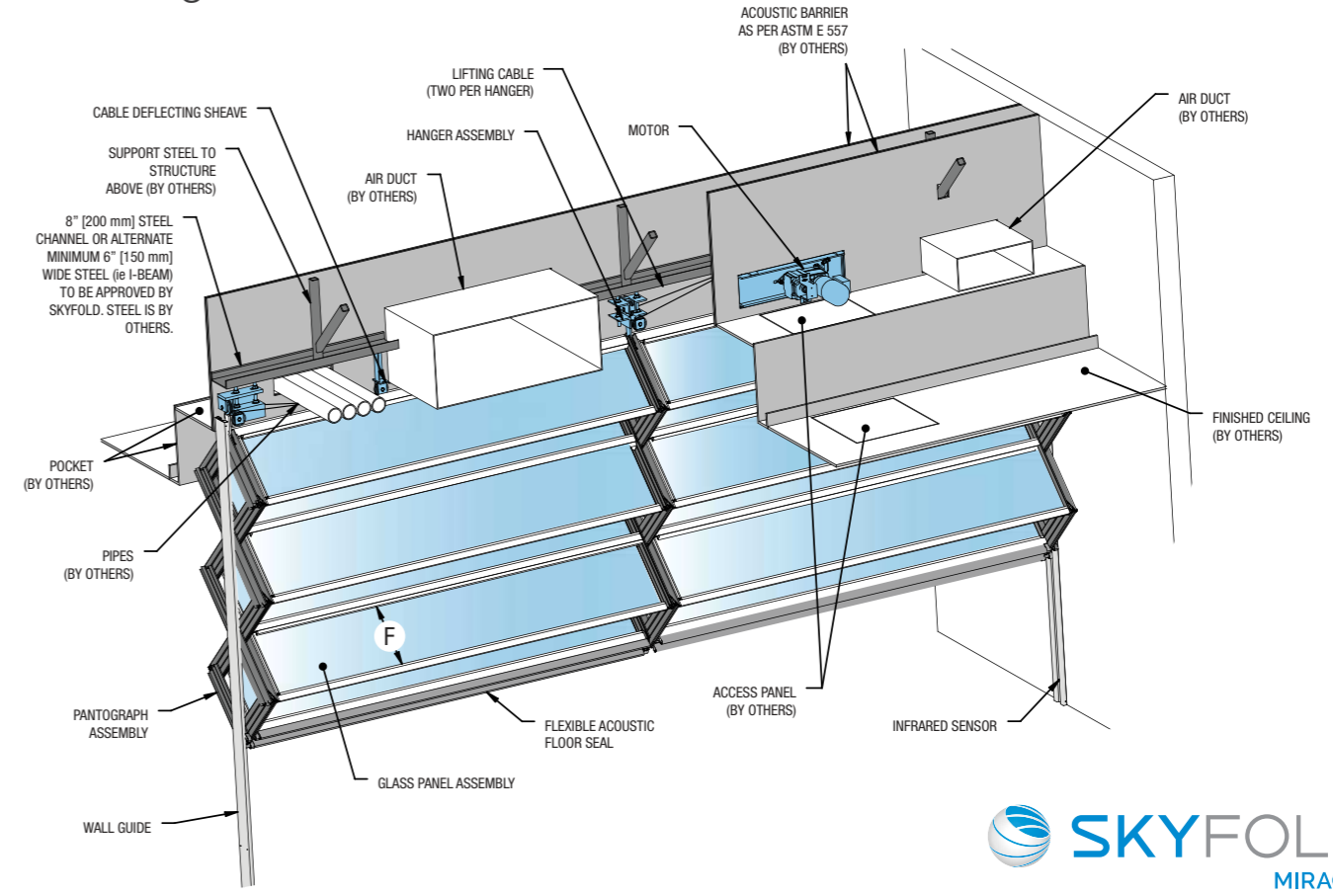
\* Beam heights indicated may vary with wall size and motor size.  
This table is not for construction purposes. Refer to shop drawings for final build to dimensions.

**METRIC**

CEILING HEIGHT "A"	*BEAM HEIGHT "B"	TOP OF POCKET "C"	POCKET HEIGHT "D"	POCKET WIDTH "E"	GRID HEIGHT "F"	NUMBER OF PANELS HIGH
2440	3405	3085	645	1105	487	6 Panels High
2745	3710	3390	645	1205	538	
3050	4015	3695	645	1305	589	
3350	4320	3995	645	1410	640	
3430	4395	4075	645	1435	653	
3455	4550	4225	770	1145	508	8 Panels High
3660	4750	4430	770	1195	533	
3960	5055	4730	770	1270	572	
4265	5360	5035	770	1350	610	
4570	5665	5340	770	1425	648	
4610	5705	5380	770	1435	653	
4625	5920	5555	930	1255	538	10 Panels High
4875	6175	5805	930	1305	564	
5185	6480	6115	930	1365	594	
5490	6810	6445	955	1435	627	
5740	7065	6700	960	1485	652	
5770	7215	6840	1070	1290	556	12 Panels High
5795	7240	6880	1085	1295	559	
6100	7545	7185	1085	1350	584	
6405	7850	7490	1085	1400	610	
6710	8155	7795	1085	1450	635	
7015	8460	8100	1085	1500	660	
7315	8765	8405	1090	1550	686	

\* Beam heights indicated may vary with wall size and motor size.  
This table is not for construction purposes. Refer to shop drawings for final build to dimensions.

### Mirage Technical Drawing



### Prisma Typical Dimensions Chart

**IMPERIAL**

FINISHED CEILING "A"	*BEAM HEIGHT "B"	POCKET DEPTH "C"	POCKET WIDTH "D"	PANEL GRID HEIGHT "E"	NUMBER OF PANELS HIGH	MAX WALL THICKNESS	MAX GRID LENGTH
7'-0" 7'-6" 8'-0"	9'-7 1/2" 10'-3" 10'-10 1/2"	31.5 33 34.5	18	20.625 22.125 23.625	4 Panels High	~15	12'
8'-1" 8'-6" 9'-0" 9'-6" 10'-0"	10'- 7 1/2" 11'-1 1/2" 11'-9" 12'-4 1/4" 12'-11 1/2"	30.5 31.5 33 34.25 35.5	21	19.125 20.125 21.3125 22.5 23.75	5 Panels High	~18	12'
10'-1" 10'-6" 11'-0" 11'-6" 12'-0"	12'-9" 13'-3" 13'-10" 14'-5" 15'-0"	32 33 34 35 36	24	19.9375 20.75 21.75 22.75 23.75	6 Panels High	~21	12'

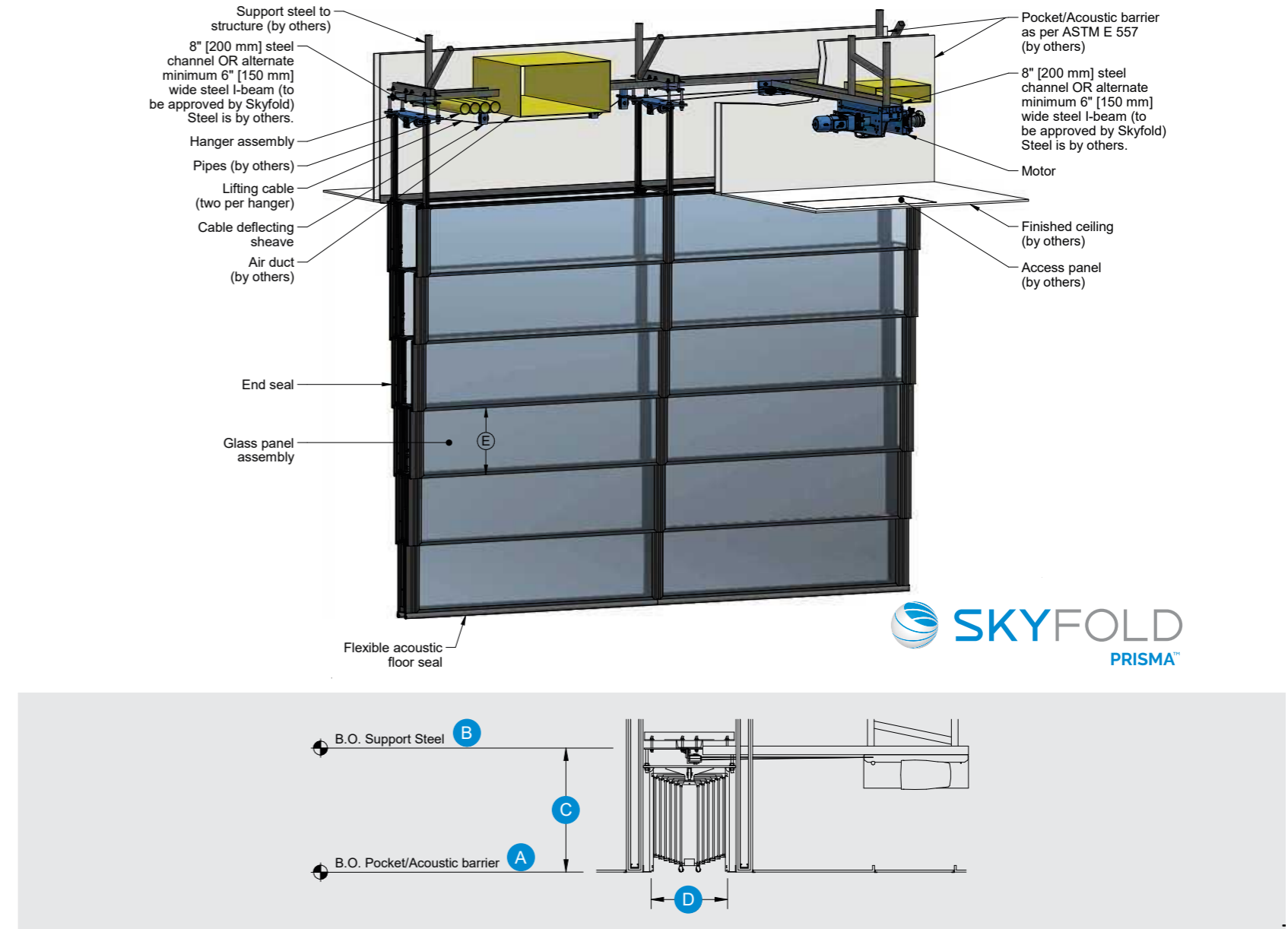
\* Beam heights indicated may vary with wall size and motor size.  
 DIMS FOR REMOTE COMPACT 90 DRIVE SYSTEM - PANELS ≤ 24"  
 This table is not for construction purposes. Refer to shop drawings for final build to dimensions.

**METRIC**

FINISHED CEILING "A"	*BEAM HEIGHT "B"	POCKET DEPTH "C"	POCKET WIDTH "D"	PANEL GRID HEIGHT "E"	NUMBER OF PANELS HIGH	MAX WALL THICKNESS	MAX GRID LENGTH
2150 2200 2250 2300 2350 2400 2440	2955 3020 3080 3145 3205 3270 3320	805 820 830 845 855 870 880	455	528.6 541.3 554 566.7 579.4 590.6 601.7	4 Panels High	~380	3655
2450 2500 2550 2600 2650 2700 2750 2800 2850 2900 2950 3000 3050	3225 3285 3345 3405 3465 3525 3585 3645 3705 3765 3825 3885 3945	775 785 795 805 815 825 835 845 855 865 875 885 895	535	482.6 493.7 503.2 512.8 523.9 533.4 542.9 552.5 563.6 573.1 582.6 593.7 603.3	5 Panels High	~460	3655
3075 3200 3350 3500 3650 3660	3885 4030 4205 4380 4555 4565	810 830 855 880 905 905	610	506.4 527 552.5 577.8 603.3 603.5	6 Panels High	~535	3655

\* Beam heights indicated may vary with wall size and motor size.  
 DIMS FOR REMOTE COMPACT 90 DRIVE SYSTEM - PANELS ≤ 673mm  
 This table is not for construction purposes. Refer to shop drawings for final build to dimensions.

### Prisma Technical Drawing





For more information visit our website or contact us directly.

**MAIN OFFICE**  
325 Lee Avenue  
Montreal, Quebec  
CANADA H9X 3S3

T +1 (514) 457-4767  
F +1 (514) 457-7111  
info@skyfold.com  
[www.skyfold.com](http://www.skyfold.com)



E02/2023

Recycled materials: Up to 97%  
Post-consumer: Up to 27%  
Pre-consumer: Up to 51%

SKYFOLD®, SKYFOLD® Classic™, SKYFOLD Zenith® and SKYFOLD Mirage® are registered trademarks of Skyfold Inc. and Skyfold Investments Ltd.

Skyfold is pleased to be an official member of the U.S. Green Building Council. The Green Council is committed to promoting better designed buildings that are not only more environmentally and socially responsible, but also help improve the quality of life for those who occupy them and the communities in which they are built. The Council has developed a benchmarking system known as LEED (Leadership in Energy & Environmental Design). When it comes to recycled materials, architects and owners who choose a Skyfold vertically folding operable wall system can calculate the following toward LEED accreditation on their projects. In order to continue protecting our environment, it is essential that we all do our part by using recycled materials whenever possible. Skyfold is proud to help.